

Photo courtesy CPKC



INNISFAIL

# 2025 COMMUNITY PROFILE

**V 1.0**

**Revised August 2025**

**© 2025 Town of Innisfail**

---

Information in this document is subject to change without notice. Although all data is believed to be the most accurate and up-to-date, the reader is advised to verify all data before making any decisions based upon the information contained in this document.

For further information, please contact:

John Powell  
Economic Development Officer  
Town of Innisfail  
4943 – 53 Street  
Innisfail, Alberta, T4G 1A1

P: 403.227.3376 ext. 217  
[john.powell@innisfail.ca](mailto:john.powell@innisfail.ca)

---

Photography supplied by:

The Town of Innisfail



Completed with the support of the Central Alberta Economic Partnership (CAEP).





# Land Acknowledgement

The Town of Innisfail acknowledges that we are meeting on Treaty 7 territory, the ancestral and traditional territory of the Blackfoot Confederacy: Kainai, Piikani and Siksika, as well as the Tsuu T'ina First Nation and Stoney Nakada First Nation. We acknowledge that this territory is home to the Metis Nation of Alberta, Region #3 within the historical Northwest Metis Homeland. We acknowledge the many First Nations, Metis, and Inuit who have lived in and cared for these lands for generations. We are grateful for the Traditional Knowledge Keepers and Elders who are still with us today and those who have gone before us.

We make this acknowledgement as an act of reconciliation and gratitude to those whose territory we reside on.

An aerial photograph of a town at sunset. The sky is filled with soft, colorful clouds in shades of purple, pink, and orange. The town below is a mix of residential houses and commercial buildings, with a large green field in the foreground. A road with several cars and a railway track are visible in the lower part of the image.

# How to use This Document

Like many municipalities in Canada and around the world, Alberta's economy continues to evolve in the post-pandemic context. Recognizing new challenges and opportunities, the Town of Innisfail has made a diversified and prosperous economy a key strategic priority. To track progress, information on the health of the local economy should be readily available to residents, the business community, and other economic development partners.

This community profile has been created to provide easy access to data in a centralized location, and includes key indicators for Innisfail's labour force, demographics, livability, and economic development. New data and metrics will be added over time in as needed and relevant.

Top economic indicators are presented as a series of infographic pages at the front of this document. A more detailed breakdown can be viewed at the top of each chapter, allowing users to dig deeper into the data. An About the Data section has been included to describe the sources of data used, and the importance of the metrics to the Town's economy.

## Table of Contents

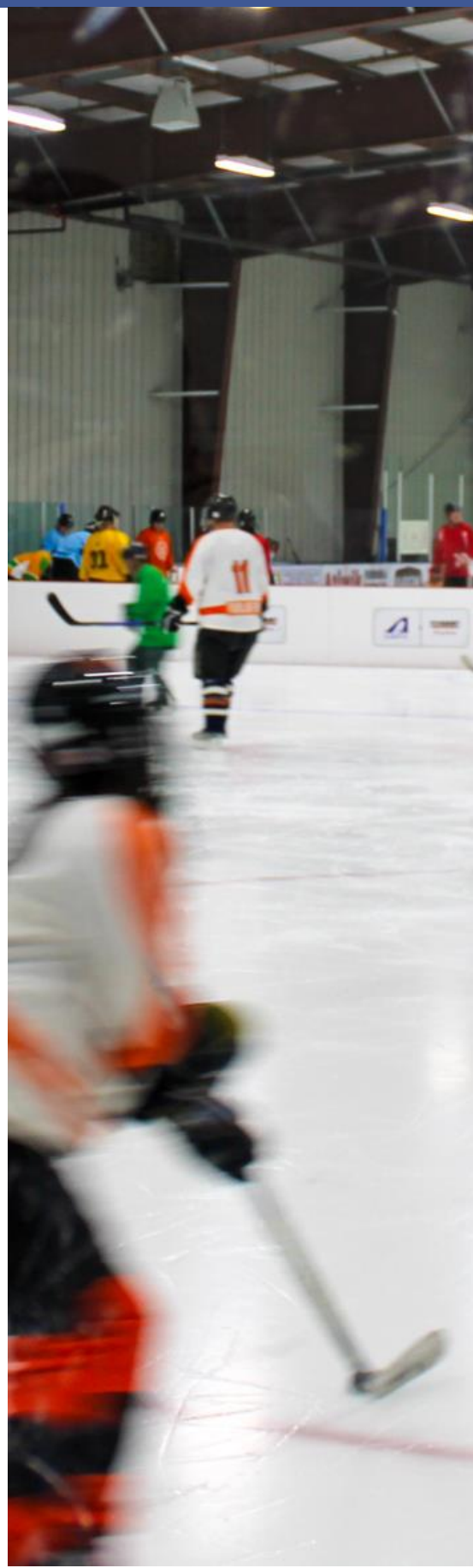
---

Introduction	1
Demographics	5
Population Size and Growth	6
Age Profile	7
Ethnicities and Languages	9
Level of Education	11
Major Fields of Study	12
Income	14
Mobility Characteristics	17
Housing Characteristics	18
Labour Force	21
Key Indicators	22
Labour Force by Occupation	23
Labour Force by Industry	25
Labour Force Commute	24
Transportation and Logistics	26
Climate	30
Connectivity	27
Rail Services	28
Airports	29
Public Transportation	29
Taxes and Utilities	32
Local Property Tax Rates	33
Federal and Provincial Income Tax Rates	33
Water and Waste Management	36



# 2025 Community Profile

Electricity and Natural Gas	38
Communication Infrastructure	40
<b>Building and Development</b>	<b>43</b>
Development Related Fees	44
Business Parks and Land Inventory	46
<b>Business Support Programs and Services</b>	<b>48</b>
National, Provincial and Municipal Support	49
Post-Secondary Education, Employment and Training	51
<b>Community Living</b>	<b>52</b>
Social and Community Services	53
Education	55
Recreational Facilities	56
Events and Tourism	58
Local Institutions	59
<b>Appendix A – General Wages by Occupation</b>	<b>60</b>
<b>Appendix B – Provincial and Federal Incentives</b>	<b>68</b>
<b>About the Data</b>	<b>83</b>



## List of Tables and Figures

---

Table 1: Population Change, 2011 to 2035	6
Table 2: Age Distribution by Gender, 2025	8
Table 3: Language Characteristics, 2025	9
Table 4: Language Characteristics, 2025	10
Table 5: Major Fields of Study, Innisfail, 2025	13
Table 6: Total Individual Income Levels, 2024	14
Table 7: Household Income Levels, 2024	15
Table 8: Innisfail Mobility Rates, 2025	17
Table 9: Dwelling Characteristics, 2025	18
Table 10: Dwelling Construction Totals by Period of Construction	20
Table 11: Labour Force Characteristics, 2025	22
Table 12: Labour Force by Occupation, 2025	24
Table 13: Labour Force by Industry, 2025	23
Table 14: Where the Innisfail Resident Labour Force Works, 2021	24
Table 15: Place of Residence for Persons Working in Innisfail, 2021	25
Table 16: Innisfail Average Temperature (°C)	30
Table 17: Local Mill Rates, effective 2025	33
Table 18: Combined Corporate Taxes – General Corporation	33
Table 19: Corporate Taxes – Canadian Controlled	34
Table 20: Personal Income Tax, 2025	35
Table 21: Monthly Waterworks Fees (Effective November 2024)	36
Table 23: Electrical Commercial Rates (Effective Jan 2025)	38
Table 24: ATCO Natural Gas Distribution - North Delivery Service Rates (Effective 2025)	39
Table 24: Communications Infrastructure	40
Table 25: Local Media	42

Table 26: Building Permit Fee Structure	44
Table 27: National and Provincial Support Organizations	49
Table 28: Local/Regional Support Organizations	50
Table 29: Education, Employment and Training Centres	51
Table 30: Financial Institutions Servicing Innisfail	59
Table 31: Real Estate Offices Servicing Innisfail	59
Table 32: General Wages (Red Deer Region, Alberta) by Occupation	60
Table 33: Provincial Funding	68
Table 34: Capital Funding	69
Table 35: Commercialization Funding	71
Table 36: EDO-Community Infrastructure	72
Table 37: Clean-Tech, Energy and Environment	73
Table 38: Creative Industries	76
Table 39: Exports	78
Table 40: Human Resources and Training	79
Table 41: Innovation	81
Figure 1: Age Distribution Chart, 2025	7
Figure 2: Educational Attainment for Age Group 25-64, 2025	11
Figure 3: Major Fields of Study of Residents Ages 15 and Older, 2025	12
Figure 4: Employment Income Levels, 2024	16
Figure 5: Structure type by Occupied Dwelling, 2025	19
Figure 6: Labour Force by Occupation, 2025	23
Figure 7: Labour Force by Industry, 2025	25
Figure 8: Innisfail Average Precipitation	31



# 2025 Community Profile



## Community Snapshot

Located along Alberta's busy CANAMEX trade corridor, Queen Elizabeth II Highway, the town of Innisfail is strategically situated between Calgary and Edmonton. Just 15 minutes south of Red Deer, the Town offers businesses and residents access major urban centres while retaining the advantages of a smaller, connected community. Innisfail lies at the centre of a 200-kilometre trading radius with access to nearly 3 million people, giving businesses significant reach from a cost-effective base. The community offers competitive tax rates, affordable serviced land, and a business-friendly administration, making it an attractive option for entrepreneurs and investors. Innisfail supports a vibrant mix of retail, commercial, and industrial activity, while employers benefit from access to a skilled and diverse workforce known for its strong rural work ethic and community-minded values.



### Investment Attraction Sectors

Carbon  
Capture

Renewable  
Energy

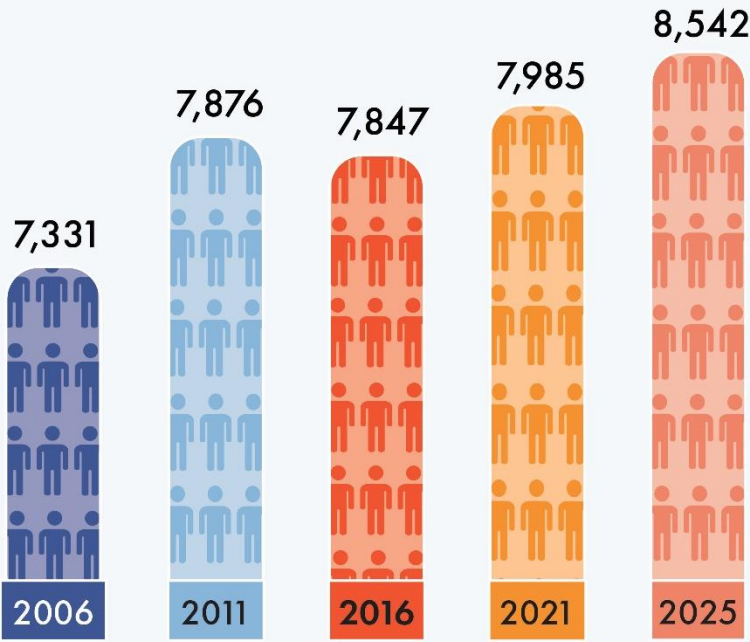
Downtown  
Commercial

Advanced  
Manufacturing

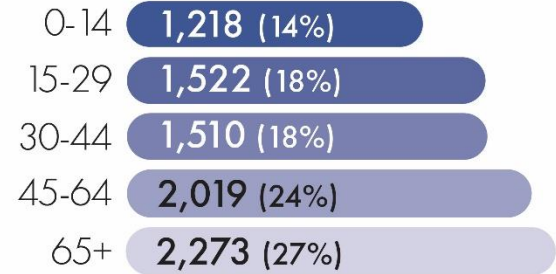
Value-Added  
Agriculture



### Population Growth



### Age Breakdown



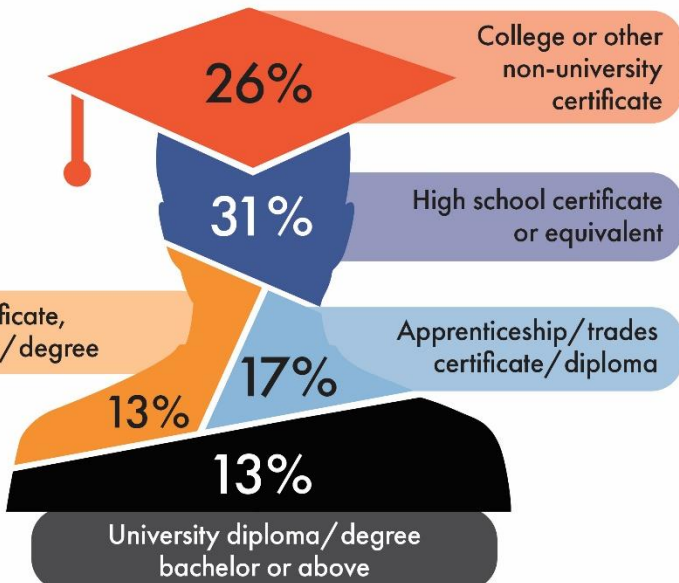
### MEDIAN AVERAGE

Town Age	Town Age
45	45
Alberta Age	Alberta Age
38	39

### Educational Attainment

For the population aged 25-64.

31% Secondary | 56% Post-secondary



### Knowledge of Languages



Top 5 Non-Official Languages Most Commonly Spoken*	Language	Percentage
	Tagalog	28%
	German	12%
	Spanish	7%
	Hindu	6%
	Ukrainian	4%

\*Percentage of people speaking non-official languages.

# Labour Force



# 2025 Community Profile



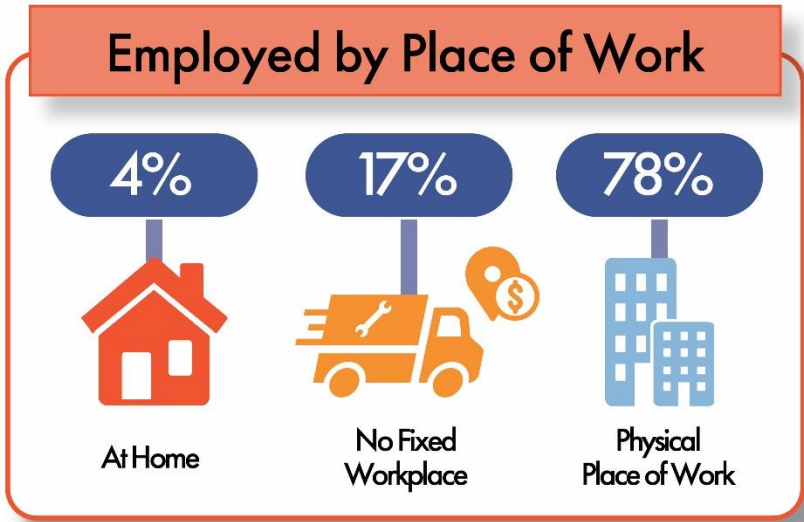
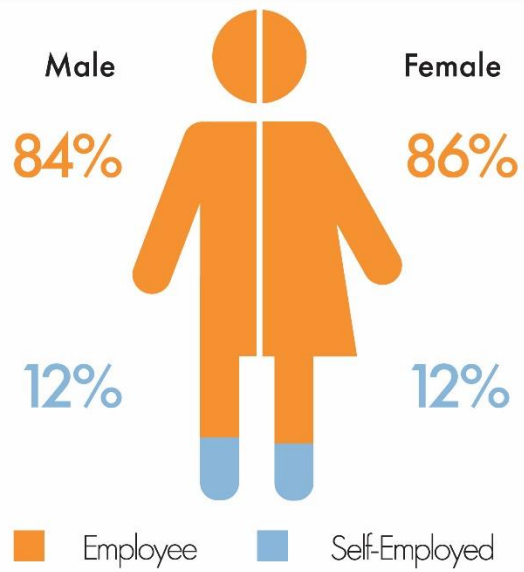
## Top 5 Occupations\*



## Top 5 Sectors by Industry\*



## Class of Worker

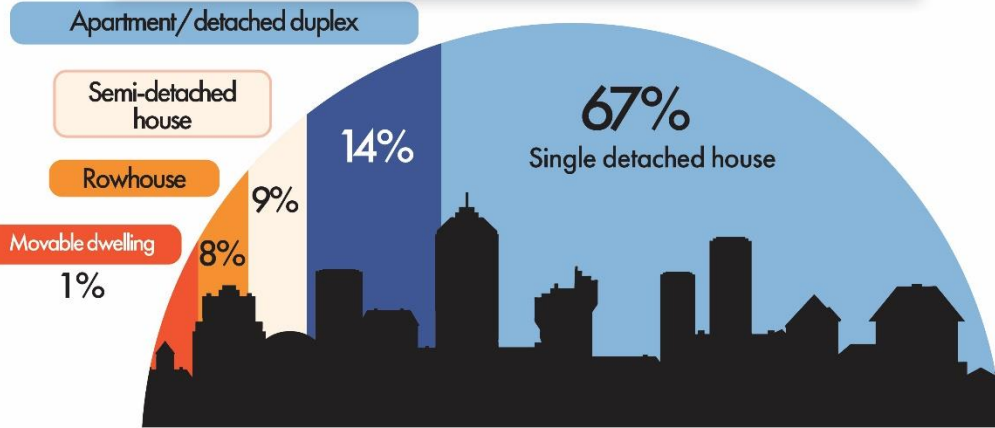


\*By Jobs in the Community, Lightcast Analyst 2024.

All data sourced from Manifold SuperDemographics 2025, unless otherwise specified.



### Breakdown of Dwelling Type



### Affordability

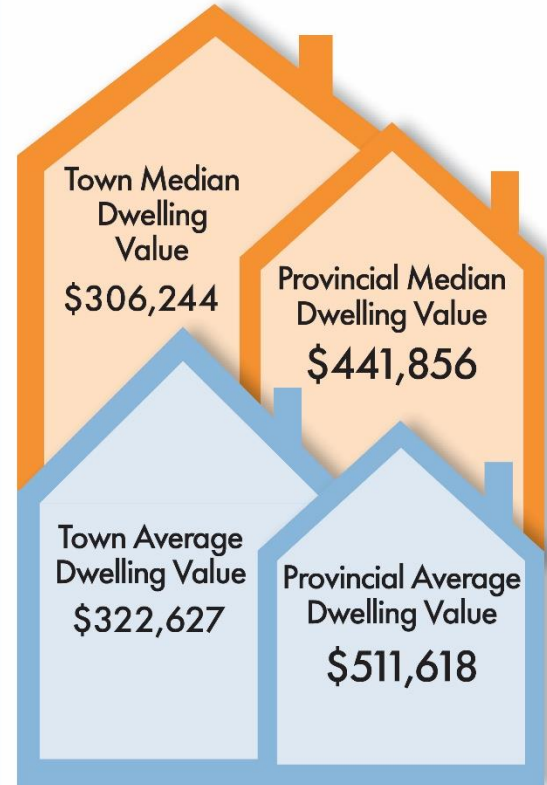


**18%**

Alberta  
21%

of Innisfail's homeowners spend 30% or more of household total income on shelter costs.

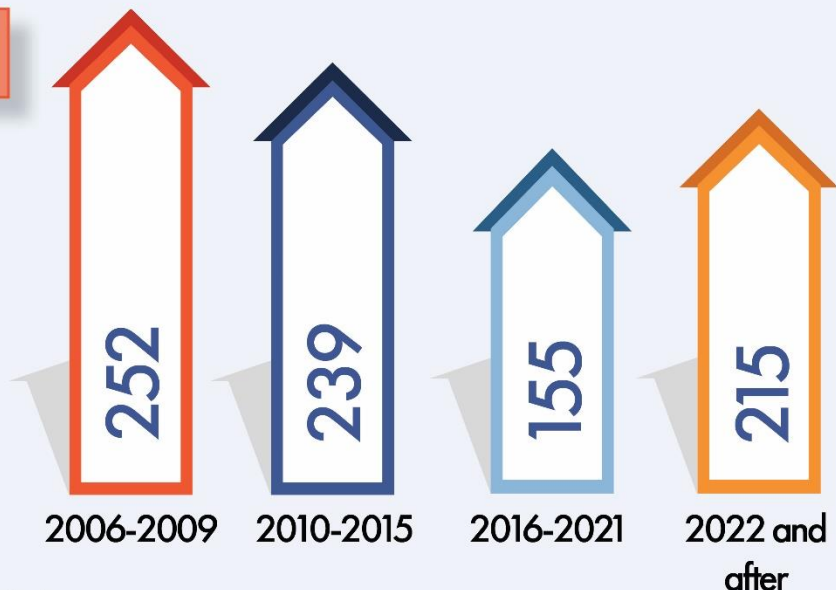
### Dwelling Value



### Construction of Dwellings



**2,764**  
Before 2005



## Demographics



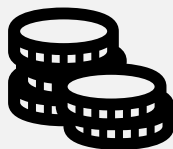
### Language

Nearly six hundred (572, or 6.1%) Innisfail residents speak a non-official language.

### Household and Earnings



- 18% of Innisfail's homeowners spend 30% or more of household total income on shelter costs.



- In 2024, median total income for all Innisfail residents 15 years and over was \$44,082.



- In 2024, the average and median incomes for households in Innisfail were lower in comparison to Alberta figures, but cost of living differences offset this, leading to higher discretionary income.

### Takeaways

1. From 2006 to 2011 Innisfail's population grew considerably (7.4%) followed by a decade of slight decline (-0.4% from 2011 to 2016) and slight growth (1.8% between 2016 and 2021).
2. As of 2025 it is estimated that the town's population has grown above 8,500, with projected rates of growth of between 4-5% over the next two five-year periods.
3. This leads to an overall projected population of 9,376 by 2035, an increase of approximately 1,500 residents since 2011.
4. The Town has a much larger relative population of older adults and retirement-aged individuals (55+) than Alberta, suggesting that if this demographic ages in place, additional supports for seniors may be needed in the community.
5. The most common "non-official" languages residents speak are Tagalog and German.

The average age in Innisfail is 45 compared to the provincial figure of 39.

#### AVERAGE

Town Age  
**45**

Alberta Age  
**39**

## Population Size and Growth

After a decade of relatively minimal growth (or slight contraction) the town is poised to have growth rates of approximately 5% over the next 10 years. Overall, the community grew by 1.4% between 2011 and 2021, while the population in Alberta grew by approximately 16.9% during the same time period. Future growth is expected to be more similar to the province, with rates of growth of 5.0% and 4.5% locally, compared to 7.0% and 6.2% provincially.

The following table illustrates past population growth based on survey data (Statistics Canada), as well as the estimated current and future population from Manifold SuperDemographics. 2025 population counts showcase spring 2025 data and reflect Manifold estimates. Different datasets may provide different estimates.



**Table 1: Population Change, 2011 to 2035**

	2011	2016	2021	2025	2030	2035
<b>Innisfail</b>	7,876	7,847	7,985	8,542	8,973	9,376
% Change	7.4%	-0.4%	1.8%	N/C	5.0%	4.5%
	2011	2016	2021	2025	2030	2035
<b>Alberta</b>	3,645,257	4,067,175	4,262,635	4,950,528	5,298,055	5,624,945
% Change	10.8%	11.6%	4.8%	N/C	7.0%	6.2%

Source: Statistics Canada 2006, 2011, 2016 and 2021 and Manifold SuperDemographics 2025. 2025-2035 are estimates, n/c = not comparable.

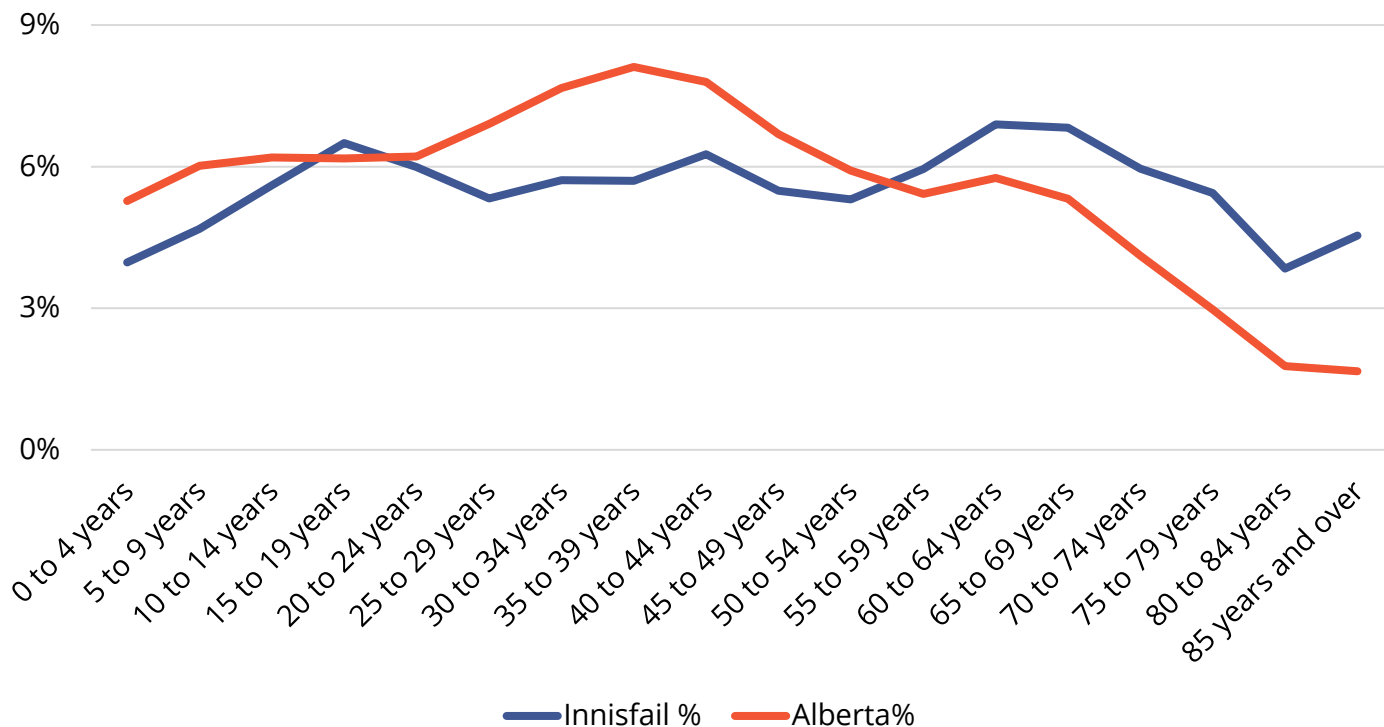
## Age Profile

Innisfail has seen considerable growth from 2021 to 2025 and is expected to continue to grow. The current population is quite a bit older than Alberta, based on five-year age cohorts, suggesting that an influx of younger individuals would help offset potential rising service needs.

Compared to Alberta, the town has a lower percentage of youth (ages 0-14) young adults (ages 20-29), and middle-aged residents (30-50). Comparably, the town has a much higher percentage of older residents either approaching retirement (55+) or seniors (65+) living in the community (Figure 1).

MEDIAN	AVERAGE
Town Age <b>45</b>	Town Age <b>45</b>
Alberta Age <b>38</b>	Alberta Age <b>39</b>

**Figure 1: Age Distribution Chart, 2025**



Source: Manifold Data Mining Inc. SuperDemographics 2025.

Table 2 presents age distribution percentages and totals for Innisfail by five-year cohorts for the total population as well as a breakdown for male and female residents.

**Table 2: Age Distribution by Gender, 2025**

Characteristics	Innisfail	Male	Female
<b>Total Population</b>	<b>8,542</b>	<b>4,072</b>	<b>4,470</b>
0 to 4 years	339	170	168
5 to 9 years	400	200	200
10 to 14 years	479	257	222
15 to 19 years	555	279	276
20 to 24 years	512	276	237
25 to 29 years	455	230	225
30 to 34 years	488	242	245
35 to 39 years	487	238	249
40 to 44 years	535	262	273
45 to 49 years	469	236	233
50 to 54 years	453	210	243
55 to 59 years	508	233	275
60 to 64 years	589	281	308
65 to 69 years	583	278	304
70 to 74 years	509	217	292
75 to 79 years	465	199	267
80 to 84 years	328	127	202
85 years and over	388	136	252

Source: McSweeney and Associates from Manifold Data Mining Inc. SuperDemographics 2025.



## Ethnicities and Languages

Table 3 indicates knowledge of Canada’s official languages, and any non-official languages residents speak. Over 99% of residents in Innisfail speak English, which is above the provincial figure. Approximately 6.7% of residents speak a non-official language, nearly three times as many residents who speak French.

**Table 3: Language Characteristics, 2025**

Characteristics	Innisfail	Innisfail	Alberta
<b>Total Population</b>	<b>8,542</b>	<b>100%</b>	<b>100%</b>
English	8,489	99.4%	94.7%
French	245	2.9%	6.0%
Non-Official Languages	572	6.7%	32.2%

Source: McSweeney and Associates from Manifold Data Mining Inc. SuperDemographics 2025.



**6.7% of Innisfail residents speak a non-official language.**



Table 4 illustrates the most common languages outside of the official languages of Canada. Percentages presented are in relation to the total number of non-official languages spoken in the community, not of the total population.

**Table 4: Language Characteristics, 2025**

Characteristics	Innisfail	Innisfail
<b>Total population with knowledge of non-official languages</b>	<b>572</b>	<b>100%</b>
Tagalog	163	28.5%
German	68	11.9%
Spanish	41	7.2%
Hindi	36	6.3%
Ukrainian	21	3.7%
Cebuano	16	2.8%

Source: McSweeney and Associates from Manifold Data Mining Inc. SuperDemographics 2025.

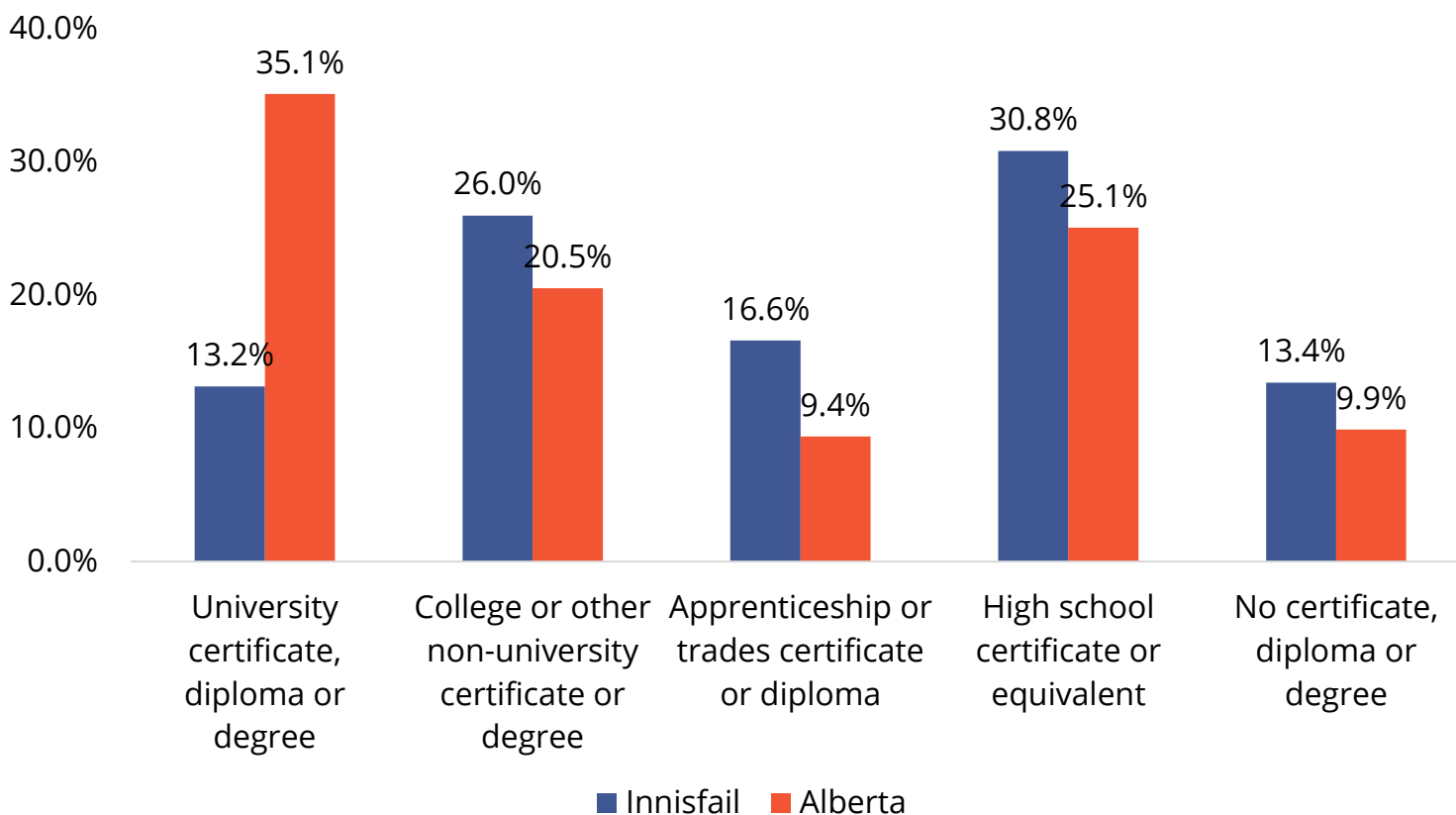


## Level of Education

- Just under 10% of residents have no certificate, diploma or degree.
- The percentage of persons with an apprenticeship or trades certificate or diploma is higher than the province (16.6% vs. 9.4% in Alberta).
- Over one in four (26.0%) residents have attained college level education, while 13.2% have completed university level education.

**55.7% of town residents between 25 and 64 have post-secondary education.**

**Figure 2: Educational Attainment for Age Group 25-64, 2025**



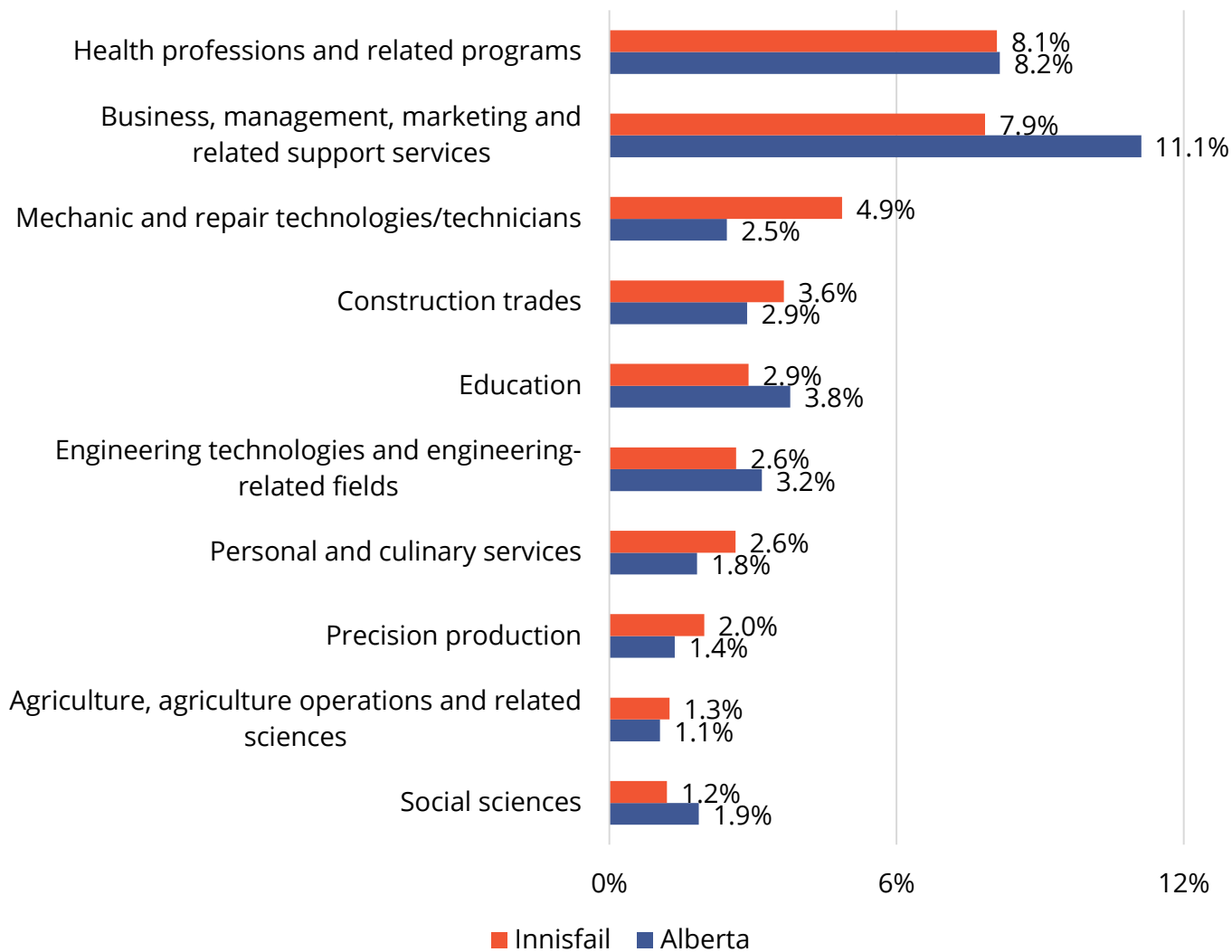
Source: Manifold Data Mining Inc. SuperDemographics 2025.

## Major Fields of Study

Figure 3 and Table 5 illustrate the most common skills/knowledge types attained by residents in Innisfail, as measured by the major fields of study of residents ages 15 and older who have completed a postsecondary education.



**Figure 3: Major Fields of Study of Residents Ages 15 and Older, 2025**



Source: McSweeney and Associates from Manifold Data Mining Inc. 2025.

When breaking down major fields of study for residents in Innisfail by gender, it becomes clear that there are significant differences in fields of study undertaken. Notably, males over 15 in Innisfail are much more likely to have studied **architecture, engineering and related technologies**, while females were much more likely to have pursued educational training in **health and related fields** or **business, management and public administration**.



**Table 5: Major Fields of Study, Innisfail, 2025**

Field of Study	Total %	Female %	Male%
No postsecondary certificate, diploma or degree	55%	56%	53%
Architecture, engineering, and related technologies	14%	2%	27%
Health and related fields	9%	13%	3%
Personal, protective and transportation services	4%	4%	4%
Education	3%	4%	2%
Business, management and public administration	8%	11%	5%
Physical and life sciences and technologies	1%	1%	0%
Social and behavioural sciences and law	3%	5%	2%
Humanities	1%	1%	1%
Mathematics, computer and information sciences	1%	1%	1%
Visual and performing arts, and communications technologies	0%	1%	0%
Agriculture, natural resources and conservation	2%	1%	2%

Source: McSweeney and Associates from Manifold Data Mining Inc. 2025.

## Income

Table 6 shows the breakdown of total individual incomes for Innisfail residents in 2024<sup>1</sup>. In 2024, median total income for all town residents 15 years and over was \$44,082. Approximately 39.2% of residents earned over \$50,000 in 2024, and 12.9% of residents earned over \$90,000.



MEDIAN  
EMPLOYMENT  
INCOME

**\$44,082**

**Table 6: Total Individual Income Levels, 2024**

Characteristic	Total	Male	Female
<b>Total 15 years and over</b>	7,324	3,444	3,879
Without total income	263	117	146
With total income	7,061	3,327	3,733
Under \$10,000 (including loss)	428	141	287
\$10,000 to \$19,999	743	232	515
\$20,000 to \$29,999	1,281	493	775
\$30,000 to \$39,999	938	415	554
\$40,000 to \$49,999	799	344	436
\$50,000 to \$59,999	641	307	346
\$60,000 to \$69,999	530	280	253
\$70,000 to \$79,999	434	244	184
\$80,000 to \$89,999	324	197	123
\$90,000 to \$99,999	249	148	103
\$100,000 and over	694	525	155
Characteristic	Total	Male	Female
Median total income \$	\$44,082	\$55,430	\$37,854
Average total income \$	\$58,560	\$72,027	\$46,420

Source: Manifold Data Mining Inc. SuperDemographics 2025 (2024 incomes).

Where the statistical unit is a household, economic family or census family, total income refers to the sum of the total incomes of all persons who are members of that statistical unit.

<sup>1</sup> Please note that the 2025 Manifold data uses 2024 income data, as it is the most recent income information available.

Table 7 demonstrates, using 2024 income data, that the median and average incomes for households in Innisfail were lower in comparison to households in Alberta. As will be shown in later tables, this decreased income is offset by a lower cost of living in the town.

**Table 7: Household Income Levels, 2024**

Characteristic	Total	Innisfail %	Alberta
Under \$15,000	13	0.4%	1.8%
\$15,000 to \$19,999	30	0.8%	1.0%
\$20,000 to \$24,999	141	3.9%	2.3%
\$25,000 to \$29,999	193	5.3%	2.8%
\$30,000 to \$34,999	147	4.1%	2.7%
\$35,000 to \$39,999	136	3.8%	2.8%
\$40,000 to \$44,999	143	3.9%	3.1%
\$45,000 to \$49,999	183	5.0%	3.3%
\$50,000 to \$59,999	219	6.0%	5.3%
\$60,000 to \$69,999	296	8.2%	6.3%
\$70,000 to \$79,999	262	7.2%	6.4%
\$80,000 to \$89,999	225	6.2%	6.3%
\$90,000 to \$99,999	226	6.2%	6.1%
\$100,000 and over	1,413	39.0%	49.7%
<b>Total</b>	<b>3,626</b>	<b>100%</b>	<b>100%</b>
<b>Median household income \$</b>	<b>\$83,115</b>		<b>\$110,576</b>
<b>Average household income \$</b>	<b>\$109,154</b>		<b>\$141,613</b>

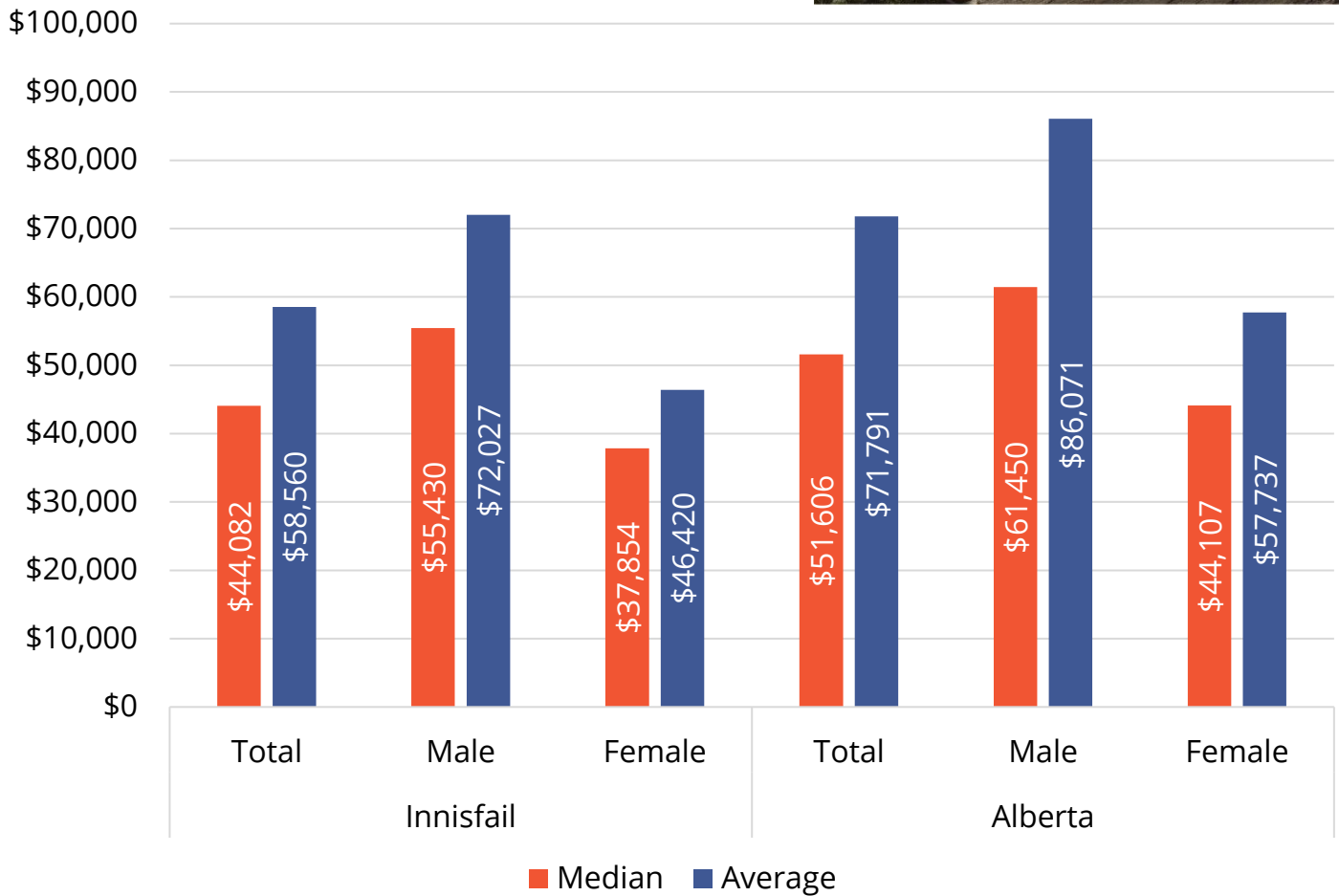
Source: McSweeney and Associates from Manifold Data Mining Inc. SuperDemographics 2025 (2024 incomes).



Male-female income disparity was prevalent in 2024 in Innisfail, with males earning average and median incomes \$20-\$25,000 higher than females. However, when compared to provincial average and median figures, the town presents a slightly improved income disparity. Figure 4 presents employment income levels<sup>2</sup>.



**Figure 4: Employment Income Levels, 2024**



Source: McSweeney and Associates from Manifold Data Mining Inc. SuperDemographics 2025 (2024 incomes).

<sup>2</sup> Please note, these are different from household income levels presented in Table 8.

## Mobility Characteristics

Three-in-five Innisfail households have remained within their residence over the past five years (5,070 residents, or 62% of the sample size), with the most common migrants being from within province, rather than outside of Alberta or Canada (Table 8). Specifically, 1,641 of 1,866 households who moved to Innisfail over this timeframe were from other communities within the province of Alberta.



**Table 8: Innisfail Mobility Rates, 2025**

Characteristics	Mobility Status 1 Year Ago	Mobility Status 5 Years Ago
<b>Total population</b>	<b>8,450</b>	<b>8,186</b>
Non-movers	7,424	5,070
Movers	1,026	3,116
Non-migrants	512	1,250
Migrants	514	1,866
Internal Migrants	514	1,815
Intra-provincial migrants	465	1,641
Interprovincial migrants	50	174
Migrants from outside Canada	0	51

Source: Manifold Data Mining Inc. SuperDemographics 2025.

**Mobility status** refers to the relationship between a person's usual place of residence now and either one or five years ago.

**Non-movers** are persons who were living at the same address and **Movers** are persons who were living at a different address.

**Non-migrants** are movers who, on Census Day, were living at a different address, but in the same census subdivision (CSD).

**Migrants** are movers who were residing in a different CSD (internal migrants) or who were living outside Canada (external migrants).

## Housing Characteristics

On average, residents of Innisfail face significantly lower dwelling values and monthly shelter costs suggesting lesser expenses when compared to provincial figures (Table 9). As only 18% of households in Innisfail spend 30% or more of total household income on shelter costs (compared to 21% of households across Alberta), it can be seen that these lower costs offset any decreased salaries compared to provincial averages.

**Table 9: Dwelling Characteristics, 2025**

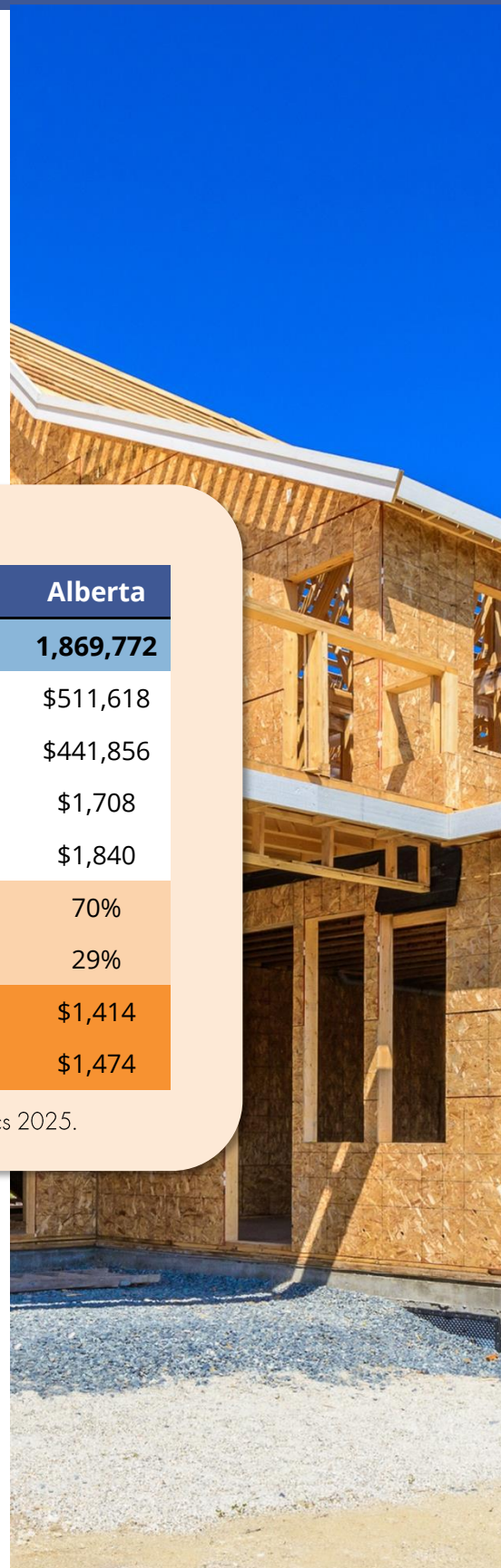
	Innisfail	Alberta
<b>Total number of private households</b>	<b>3,626</b>	<b>1,869,772</b>
Average value of dwelling \$	\$322,627	\$511,618
Median value of dwellings (\$)	\$306,244	\$441,856
Median monthly shelter costs for owned dwellings	\$1,211	\$1,708
Average monthly shelter costs for owned dwellings	\$1,403	\$1,840
% Owned	70%	70%
% Rented	30%	29%
Median monthly shelter costs for rented dwellings	\$1,198	\$1,414
Average monthly shelter costs for rented dwellings	\$1,275	\$1,474

Source: McSweeney and Associates from Manifold Data Mining Inc. SuperDemographics 2025.



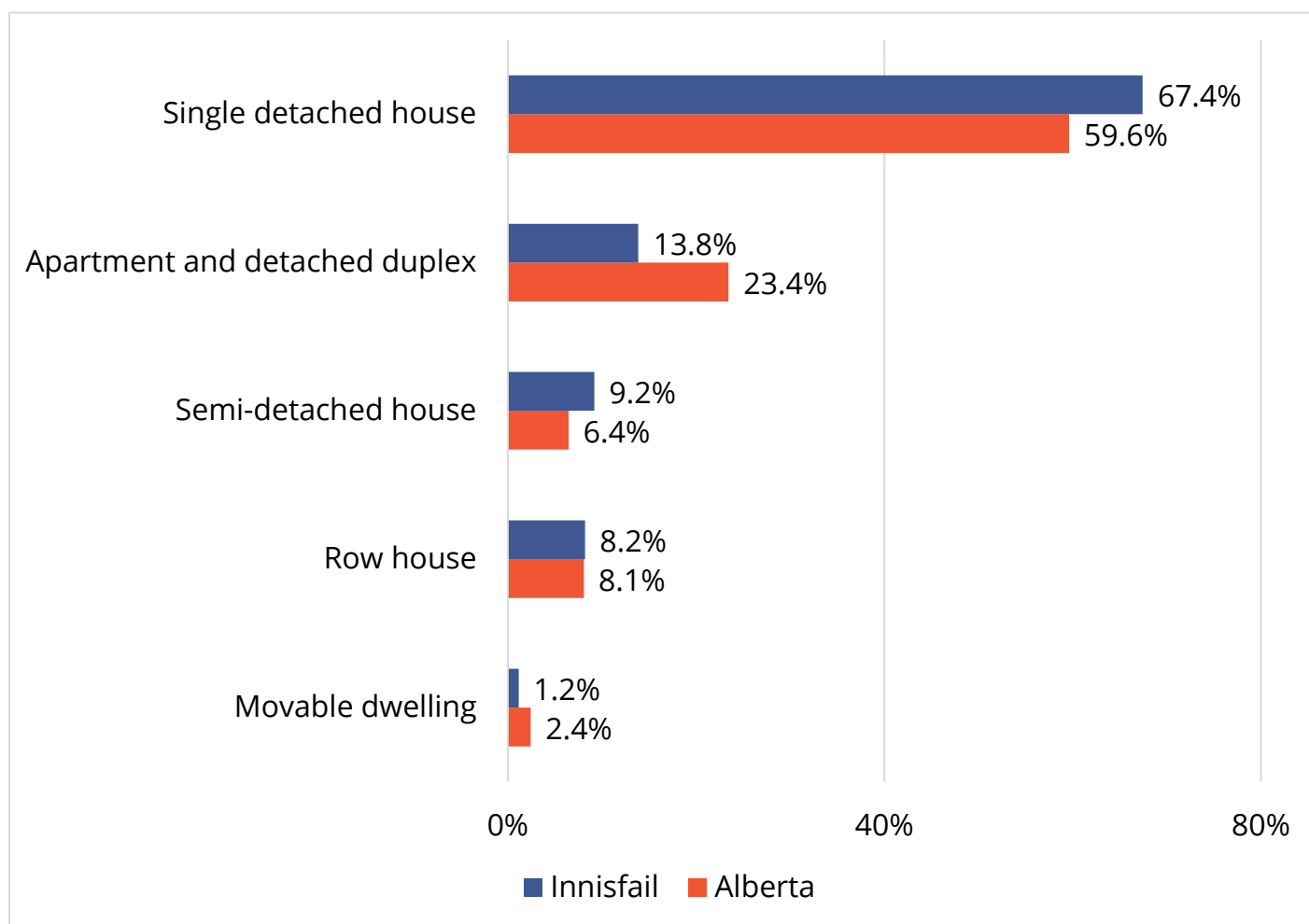
**18%** of Innisfail's homeowners spend 30% or more of household total income on shelter costs.

Alberta  
21%



Innisfail has a fairly comparable level of concentration as regards dwelling types when compared to the rest of Alberta. Locally there are more single detached homes (67.4% of housing units are single detached homes in the town, compared to 59.6% across Alberta) with fewer apartments (13.8% compared to 23.4%). However, these differences are fairly slight compared to more typical rural communities, which see single-detached houses representing over 75% of dwelling types.

**Figure 5: Structure type by Occupied Dwelling, 2025<sup>3</sup>**



Source: McSweeney & Associates from Manifold Data Mining Inc. SuperDemographics 2025.

<sup>3</sup> Detached duplexes that are one unit are captured within semi-detached houses. Detached duplexes with multiple units are captured within the “apartment and detached duplex” category.

Dwelling construction has been fairly consistent since 2006, with a slight decline in growth rates from 2016 to 2021, followed by a rebound from 2022 to 2024, with growth rates over the last 3 years outpacing any of the previous periods on an annual basis. As Canada faces a housing cost challenge, this uptick in building growth is positive.

**Table 10: Dwelling Construction Totals by Period of Construction**

Characteristic	Innisfail	Percentage of Total
Pre-2005	2,764	76%
2006-2009	252	7%
2010-2015	239	7%
2016-2021	155	4%
2022-2024	215	6%

Source: McSweeney & Associates from Manifold Data Mining Inc. SuperDemographics 2025.



## Labour Force



### Key Indicators

Innisfail is home to a labour force of nearly 4,500 persons.

### Labour Force Commute



- The majority of residents work within town, though the most common places of work for commuters are Red Deer, Red Deer County, and Olds.



- The town draws considerable labour from Red Deer County (675 County residents commute into Innisfail for work) and Red Deer (455 residents).

### Takeaways

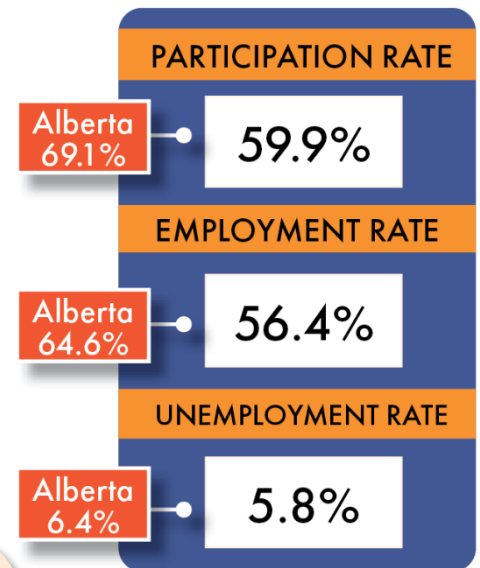
When analyzing the town's labour force, it can be seen that:

1. Economic engagement rates (participation and employment) are lower than provincial figures, an expected figure given the town's relatively older population.
2. Town residents who are looking for work appear to find it at an easier rate than their provincial counterparts, as the unemployment rate is lower than the provincial mark.
3. Town residents are more likely to be working in sales and service occupations or trades, transport and equipment operators and related occupations than the provincial average.
4. Only one-in-twenty residents (5%) worked from home in 2025 as the transition to flexible work arrangements has not yet become embedded in Innisfail's workforce.
5. Instead, over three-in-four (78%) residents still have a physical office location outside of their home.

**Job count data within this section should not be compared to the job count data in the initial profile infographics, as this section relies on Manifold SuperDemographics and the job counts in the infographics rely on Lightcast Analyst Data.**

## Key Indicators

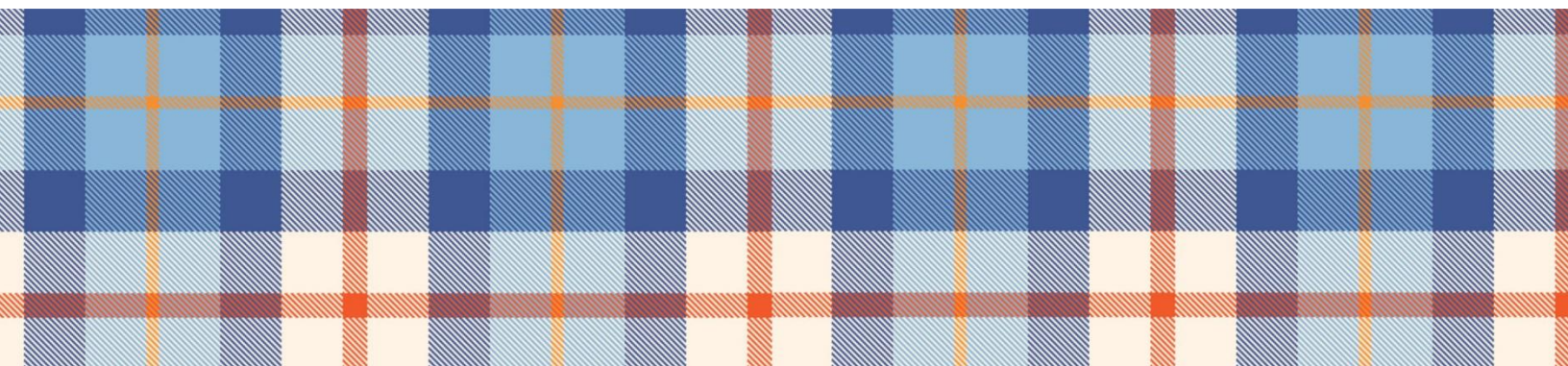
Innisfail has a labour force that is 4,385 persons strong. As illustrated in the infographic, participation and employment rates are below the provincial mark, unsurprising given the older population. However, the unemployment rate is lower than the provincial rate, suggesting residents are finding work more easily than their provincial counterparts, a positive indicator for the community.



**Table 11: Labour Force Characteristics, 2025**

Characteristic	Innisfail	Alberta
<b>Total population aged 15 years and older</b>	<b>7,324</b>	4,084,744
In the labour force	<b>4,385</b>	2,821,667
Employed	<b>4,132</b>	2,640,246
Unemployed	<b>254</b>	181,421
Not in the labour force	<b>2,939</b>	1,263,076

Source: Manifold Data Mining Inc. SuperDemographics 2025.

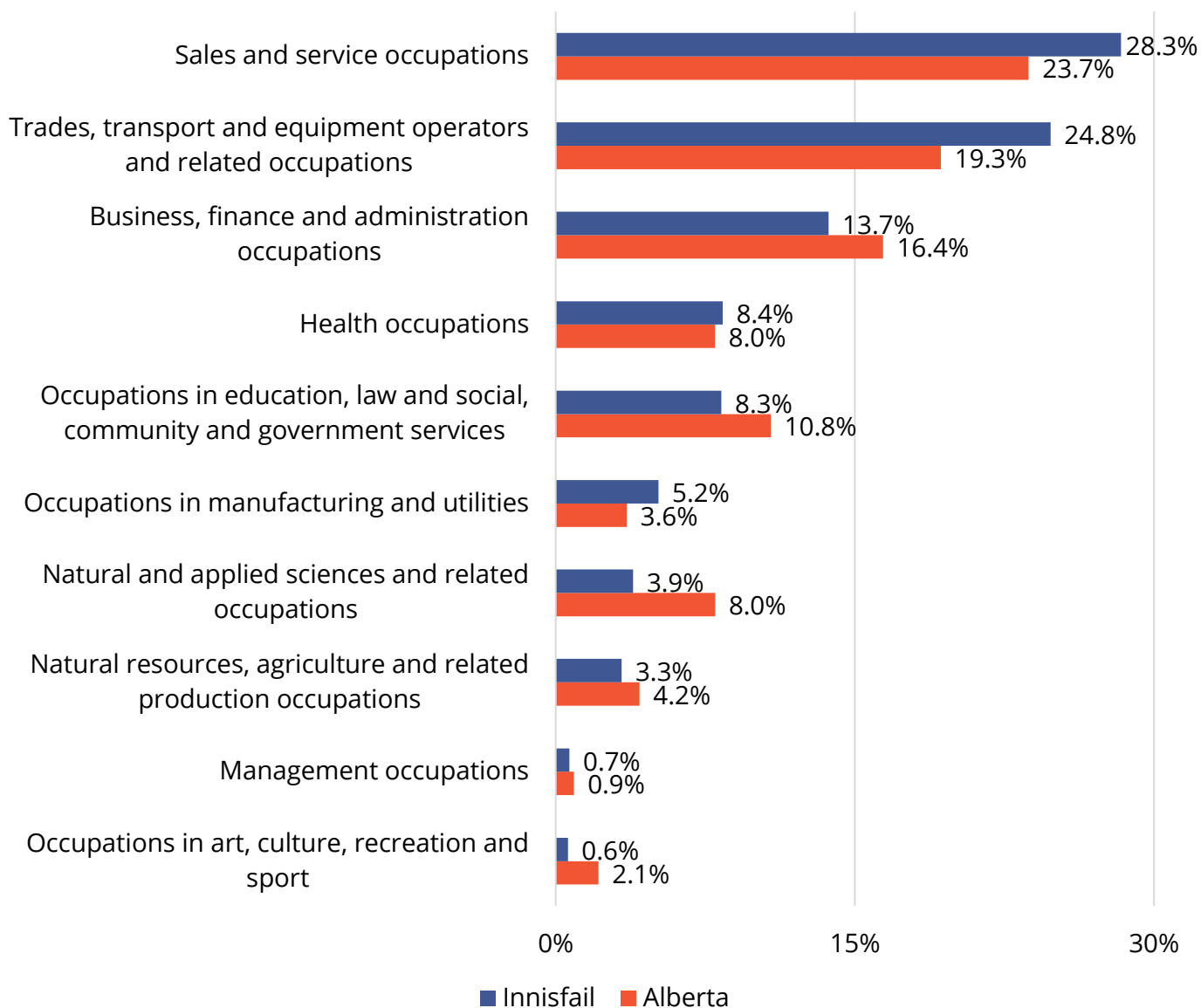


## Labour Force by Occupation

Figure 6 and Table 12 illustrate resident labour force (regardless of where the resident works) make up by occupation:

Job count data within this section should not be compared to the job count data in the initial profile infographics, as this section relies on Manifold SuperDemographics and the job counts in the infographics rely on Lightcast Analyst Data.

**Figure 6: Labour Force by Occupation, 2025**



Source: Manifold Data Mining Inc. SuperDemographics 2025.

**Table 12: Labour Force by Occupation, 2025**

Characteristic	Male	Female	Total
<b>Total labour force 15 years and over by occupation</b>	<b>2,248</b>	<b>2,137</b>	<b>4,385</b>
Occupation - Not applicable	86	38	<b>124</b>
All occupations	2,162	2,099	<b>4,261</b>
0 Management occupations	28	2	<b>30</b>
1 Business, finance and administration occupations	107	493	<b>600</b>
2 Natural and applied sciences and related occupations	156	14	<b>170</b>
3 Health occupations	46	321	<b>367</b>
4 Occupations in education, law and social, community and government services	97	267	<b>364</b>
5 Occupations in art, culture, recreation and sport	9	18	<b>27</b>
6 Sales and service occupations	478	766	<b>1,243</b>
7 Trades, transport and equipment operators and related occupations	965	123	<b>1,088</b>
8 Natural resources, agriculture and related production occupations	110	35	<b>145</b>
9 Occupations in manufacturing and utilities	166	60	<b>226</b>

Source: Manifold Data Mining Inc. SuperDemographics 2025.

- The largest occupation for employment is **sales and service occupations** (1,243 residents employed within this occupation class).
- This is followed by **trades, transport and equipment operators and related occupations** (1,088 residents employed), the only other occupation class with over 600 residents employed.



**1,243**  
Sales & Service



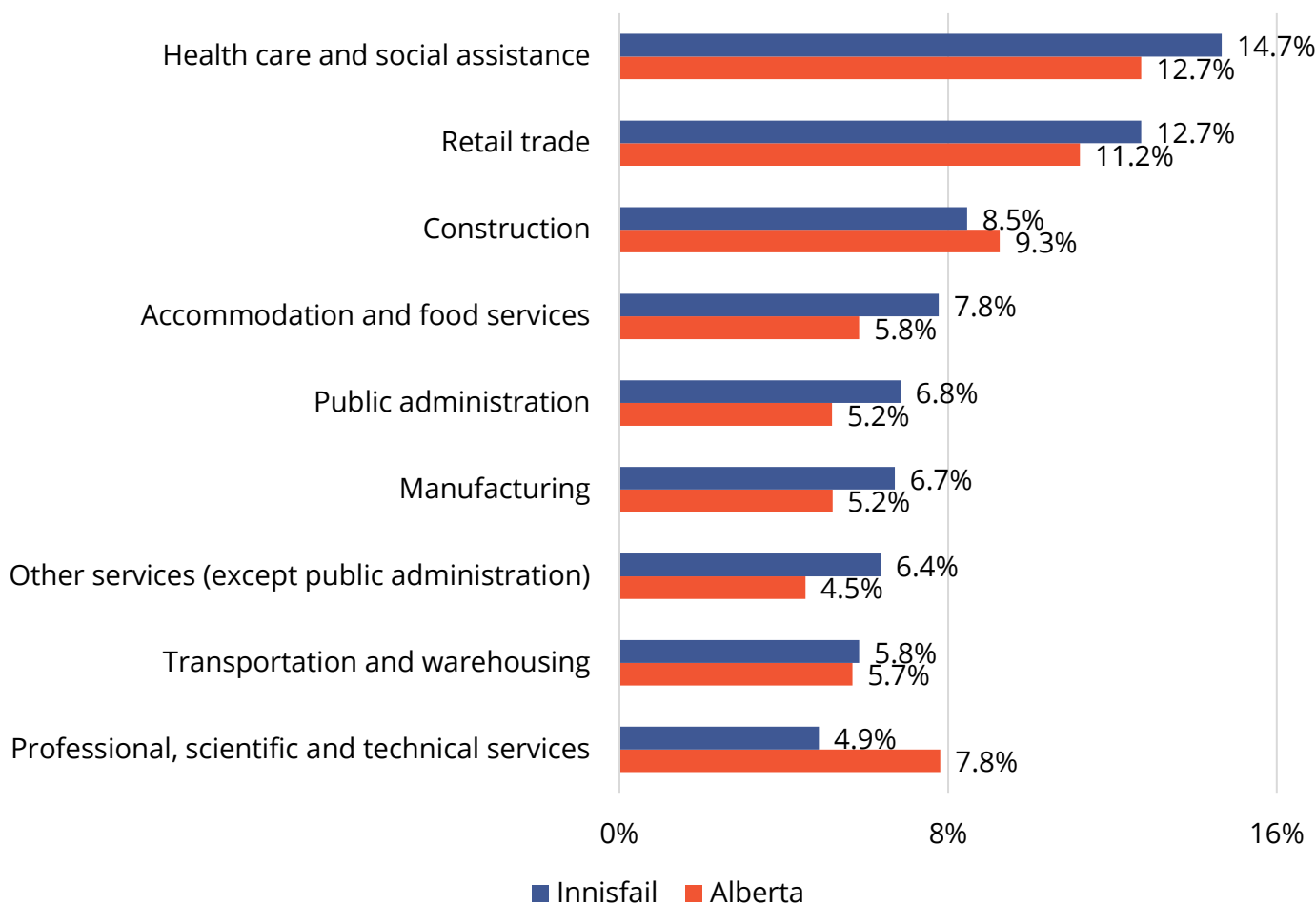
**1,088**  
Trades, Transport & Equipment Operators

## Labour Force by Industry

A similar breakdown for the town’s workforce can be applied to industries as was applied to occupations. To that end, Figure 7 and Table 13 illustrate Innisfail’s labour force make up by industry of employment:

- The **health care and social assistance** was the most heavily represented industry among residents (14.7% of the population works in this sector), slightly higher than the provincial mark (12.7%).
- Across the town’s industries of employments, trends are fairly comparable to provincial averages, with the only large differential being **professional, scientific and technical services**.

**Figure 7: Labour Force by Industry, 2025**



Source: Manifold Data Mining Inc. SuperDemographics 2025.

**Table 13: Labour Force by Industry, 2025**

Characteristic	Male	Female	Total
<b>Total labour force 15 years and over</b>	<b>2,248</b>	<b>2,137</b>	<b>4,385</b>
Industry - not applicable	86	38	124
All industries	2,162	2,099	4,261
11 Agriculture, forestry, fishing and hunting	72	48	120
21 Mining and oil and gas extraction	126	29	155
22 Utilities	35	5	39
23 Construction	348	23	371
31-33 Manufacturing	209	85	294
41 Wholesale trade	102	13	115
44-45 Retail trade	277	279	557
48-49 Transportation and warehousing	182	74	256
51 Information and cultural industries	0	0	0
52 Finance and insurance	64	77	141
53 Real estate and rental and leasing	21	17	38
54 Professional, scientific and technical services	124	90	213
55 Management of companies and enterprises	0	0	0
56 Administrative and support, waste management and remediation services	75	64	140
61 Educational services	34	146	180
62 Health care and social assistance	42	602	643
71 Arts, entertainment and recreation	22	56	78
72 Accommodation and food services	105	237	341
81 Other services (except public administration)	137	142	279
91 Public administration	187	113	300

Source: Manifold Data Mining Inc. SuperDemographics 2025.

## Labour Force Commute

Table 14 presents commuting data for those communities where Innisfail residents commute to for work and Table 15 provides data for those communities where at least 50 residents commute into Innisfail for work. Please note male and female totals may not add up to total due to Statistics Canada’s rounding.

- The majority of the resident labour force (65%) works inside the town.
- Over one-in-ten residents commute into the city of Red Deer for work (385 residents, or 15.9% of the labour pool).

**Table 14: Where the Innisfail Resident Labour Force Works, 2021**

Place of Work	Total	Male	Female
Innisfail	1,585	710	875
Red Deer	385	165	220
Red Deer County	165	100	65
Olds	125	80	50
Bowden	35	20	15
Calgary	20	15	0
Penhold	20	10	15
Lacombe County	20	20	0
Sylvan Lake	15	15	0
Lacombe	15	0	10
Wood Buffalo	15	15	0
Carstairs	10	0	10
Blackfalds	10	10	0
<b>Total workforce residing in Innisfail</b>	<b>2,420</b>	<b>1,160</b>	<b>1,260</b>
Total resident labour force with a usual place of work outside Innisfail	835	450	385
Percent of residents declaring a place of work outside of Innisfail	35%	39%	31%

Source: McSweeney and Associates, Statistics Canada, 2021 Commuting Flow.

Please note that Statistics Canada uses estimates and therefore, not all numbers will add up to— nor will all percentages add to— 100%.

**Table 15: Place of Residence for Persons Working in Innisfail, 2021**

Place of Residence	Total	Male	Female
Innisfail	1,585	710	875
Red Deer County	675	310	365
Red Deer	455	270	185
Penhold	125	55	70
Bowden	105	50	50
Sylvan Lake	95	40	55
Calgary	80	50	25
Olds	65	50	15
Airdrie	60	40	20
Mountain View County	55	25	30
<b>Total workforce in Innisfail</b>	<b>3,485</b>	<b>1,715</b>	<b>1,725</b>
Total town labour force with a usual place of residence outside Innisfail	1,900	1,005	850
Percent of town workforce declaring a place of residence outside of the town	55%	59%	49%

Source: McSweeney and Associates, Statistic Canada, 2021 Commuting Flow.

The majority of the town's commuting labour force lives within Red Deer or Red Deer County.

## Employed by Place of Work

4%



At Home

17%



No Fixed Workplace

78%



Physical Place of Work

## Transportation and Logistics



### CANAMEX Corridor

Innisfail's location along the CANAMEX Corridor gives businesses a powerful edge, supporting investment, trade growth, and stronger regional connections. This corridor sees billions of dollars worth of goods transported along it every year. As part of a major North American trade route linking Canada, the United States, and Mexico, the CANAMEX corridor enables the efficient movement of goods, services, and people. For local Innisfail businesses, it can potentially serve as a critical gateway to international markets and global opportunities.

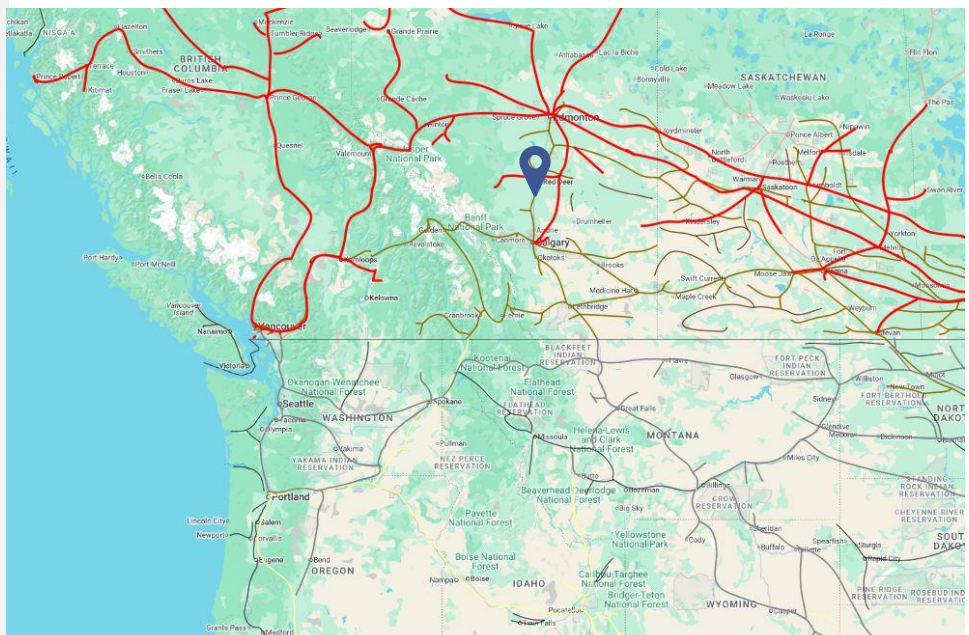
### Strategic Location

Innisfail's strategic location along QE II, at the junction of Highways 54 and 590, means there are a significant number of vehicles travelling to and from the community every day. According to Alberta's Annual Average Daily Traffic counts data, approximately 40,000 vehicles travelled on QE II between Highways 54 and 590 daily in 2024.

This exposure creates significant economic opportunity for local businesses and showcases the town's value-add advantage due to its location along the CANAMEX corridor and easy access north/south to urban centres and critical north American markets.

### Industrial Rail Spurs

A 420-metre Canadian Pacific (CP) Rail spur branching from the main line into Innisfail's South West Industrial Park was approved in early 2022. The spur enables direct rail access for Innisfail businesses, reducing shipping costs and improving logistical efficiency. It also positions the town as a more attractive destination for industrial investment, supporting job and general economic growth.



## Connectivity

### Major Urban Centres

Calgary: 119 km south via QE II.

Edmonton: 183 km north on QE II.

Lethbridge: 322 km south on QE II.

Medicine Hat: 391 km southeast along Hwys 21 and 1.

Fort McMurray: 622 km north along QE II and Hwys 28, and 63.

### Local Communities

Blackfalds: 47 km north along QE II.

Red Deer County: 16 km north along C&E TRL.

Sundre: 70 km southwest along QE II and Hwy 27.

Sylvan Lake: 39 km north along Hwy 78.

Kneehill County: 86 km southeast on Hwys 791 and 582.

Olds: 32 km south via QE II and Hwy 2A.

Red Deer: 32 km north via QE II.

### Border Crossings

Stephen, Alberta/BC: 300 km southwest on QE II and Hwy 1.

Alsask, Alberta/Saskatchewan: 325 km southeast along Hwys 590, 56, and 9.

Crowsnest, Alberta/BC: 356 km south along QE II and Hwys 540, 22, and 3.

Carway, Alberta/Montana: 368km south on QE II.

Walsh, Alberta/Saskatchewan: 443 km southeast along Hwys 590, 21, and 1.



## Rail Services

---

Innisfail rail access is a significant positive for the community and local business. Freight operations exist along the CPKC main line running through Innisfail (Central Alberta Transloading Terminal Ltd., at 5119 54 Street), with another spur in northern Innisfail on 42 Avenue. For businesses, the dual spur infrastructure creates capacity that few communities of Innisfail's size can match. The two spurs directly within Innisfail supports diverse shipping needs and improved loading options, as well as room for future growth for potential new businesses. For broader freight rail access and scale, businesses have additional larger-capacity options including Transload Logistics' Calgary facility and Calmar facility, both on the Calgary Edmonton mainline and from there to interprovincial and US destinations, urban centres, and ports.

### CPKC

**CPKC** CPKC is the combination of two historic railways – Canadian Pacific (CP) and Kansas City Southern (KCS). Since 2023, CPKC is the first and only transnational railway that connects Canada, the U.S. and Mexico with unrivaled cross-border services and port access.

---

#### CN Rail Intermodal Terminal:

12311 – 184th Street  
Edmonton, Alberta, T5V 1T3  
P: 1.888.888.5909  
[cn.ca/en/shipping-how-intermodal-terminals.htm](https://www.cn.ca/en/shipping-how-intermodal-terminals.htm)

#### CN Rail Headquarters:

935 de La Gauchetière Street West  
Montreal, Quebec, H3B 2M9  
P: 1.888.888.5909  
[cn.ca/en/index.htm](https://www.cn.ca/en/index.htm)

---

#### CPKC Transload Terminal:

Edmonton TFR  
6040 - 99 Street  
Edmonton, Alberta, T6B 2N5  
P: 1.705.682.9900

#### CPKC Intermodal Terminal:

Edmonton Intermodal Terminal  
10155 – 39 Ave NW  
Edmonton, Alberta, T6E 6C8  
P: 1.888.333.8111

#### Canadian Head Office:

7550 Ogden Dale Road S.E.  
Calgary, Alberta, T2C 4X9  
P: 1.888.333.6370  
[cpkcr.com/en](https://www.cpkcr.com/en)

## Airports

The main airports that serve Innisfail are listed below. Moreover, the town has access to two international airports within less than 2 hours drive time: Edmonton International Airport and Calgary International Airport.



Red Deer Regional Airport:  
20 km north of Innisfail off Highway 2A.



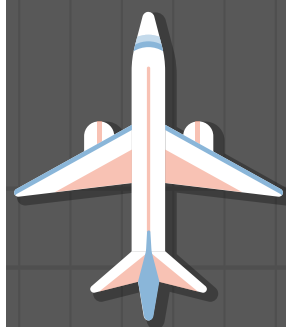
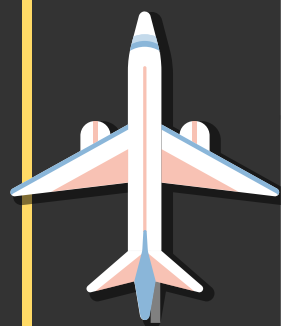
Edmonton International Airport:  
156 km north of Innisfail off Highway 2.



Calgary International Airport:  
106 km south of Innisfail off Highway 2.

## Public Transportation

Innisfail PACE Transportation is managed by Prairie Bus Lines, offering on-demand transit. Residents of Innisfail can book rides via the RideCo app (or through the Prairie Bus call centre). PACE Transportation offers trips within Innisfail, to local surrounding towns, and to Red Deer/Sylvan Lake/Olds. The service averages between 45 and 60 trips per week, supporting the transportation needs of Innisfail residents.



## Climate

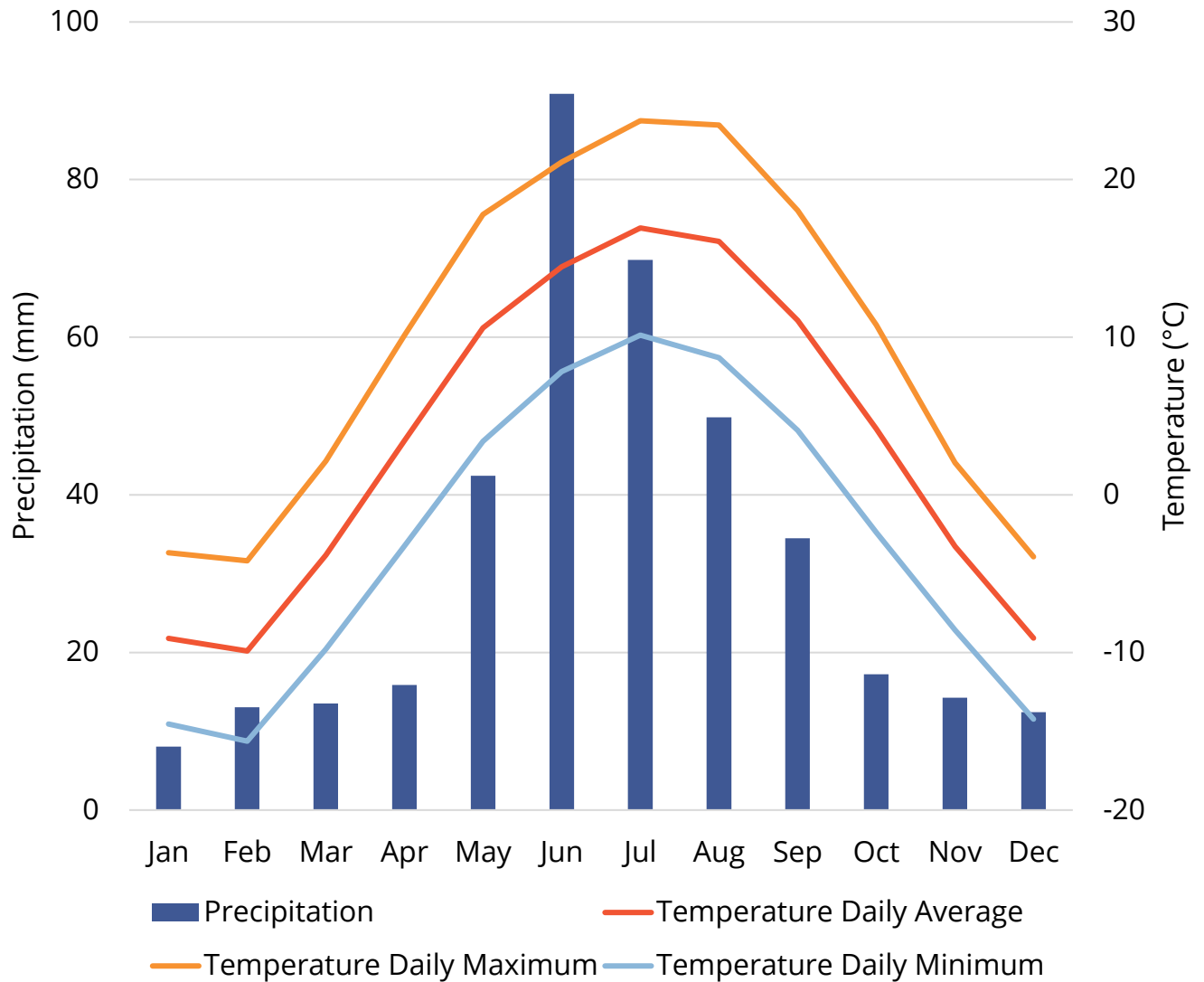
Innisfail climatic data was retrieved from the Government of Alberta’s Agriculture and Forestry Climate Information Services. Table 16 and Figure 8 illustrate average precipitation levels and temperatures.

**Table 16: Innisfail Average Temperature (°C)**

Temperature	Jan	Feb	Mar	Apr	May	Jun	Jul	Aug	Sep	Oct	Nov	Dec
Daily Average	-9.1	-9.9	-3.8	3.4	10.6	14.5	16.9	16.1	11.1	4.2	-3.3	-9.1
Daily Maximum	-3.7	-4.2	2.2	10.1	17.8	21.1	23.7	23.5	18.0	10.8	2.0	-3.9
Daily Minimum	-14.5	-15.6	-9.8	-3.2	3.4	7.8	10.1	8.7	4.1	-2.4	-8.6	-14.2
Extreme Maximum	8.6	8.0	12.7	22.6	27.0	28.6	30.7	32.0	28.4	22.3	14.3	8.0
Extreme Minimum	-31.1	-29.9	-23.8	-11.9	-3.0	2.5	5.6	3.4	-1.7	-11.5	-19.6	-26.3

Source: [Government of Alberta: Agriculture and Forestry: Climate Information Services.](#)

**Figure 8: Innisfail Average Precipitation**



Source: [Government of Alberta: Agriculture and Forestry: Climate Information Services.](https://www.alberta.ca/government-of-alberta-agriculture-and-forestry-climate-information-services)

## Taxes and Utilities



### Utility Access

Innisfail offers businesses dependable and competitively priced utility services. Moreover, local municipal water and wastewater services compare favorably within the region, bolstered by the Town's connection to regional water infrastructure. In Innisfail, utility planning for businesses is straightforward and cost-effective.

### Fiscal Prudence

Innisfail's municipal corporation consistently demonstrates fiscal prudence and stability through its taxation strategy. This careful balancing act maintains essential services while preserving financial predictability for business owners.

Innisfail provides a number of other business tax benefits, including no business taxes, no capital tax, and no machinery & equipment tax, offering businesses one of the most progressive tax environments in the country.

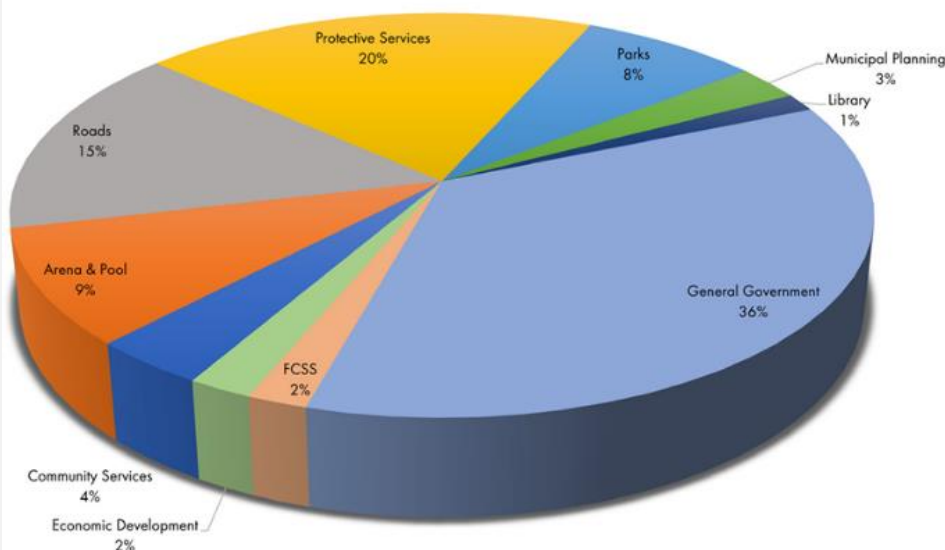
### Overview

This section describes the taxes (local, provincial and federal), cost of water and sewer connection, waste management sites, natural gas and electricity rates, and communication infrastructure.

Innisfail's residents and business community have access to natural gas (through ATCO Gas Ltd.) and electricity (through FORTIS Alberta Inc.) as well as high speed internet, telephone, tv & satellite connectivity.

### WHERE DO MY TAXES GO?

### 2025 Capital Budget



## Local Property Tax Rates

Table 17 provides local property tax rates, effective as of 2025.

**Table 17: Local Mill Rates, effective 2025**

Final Tax Rates	Residential	Non-Residential
Municipal	7.2501	8.9460
School	2.5415	3.8400
Senior Foundation	0.0309	0.0309
<b>Total</b>	<b>9.8225</b>	<b>12.8169</b>

Source: Town of Innisfail. \*Note: Mill Rates may vary slightly for individual properties.



## Federal and Provincial Income Tax Rates

Tables 18 and 19 provide federal and provincial corporate tax rates, while Table 20 provides income tax data. Please note that within Table 18, Alberta provides a manufacturing and processing tax credit that effectively reduces the corporate tax rate on the corporation's Canadian manufacturing and processing profits earned in the province to 10%.

**Table 18: Combined Corporate Taxes – General Corporation**

Corporate Tax Rates – Non-Canadian Controlled	2025
<b>Combined Federal and Provincial</b>	<b>%</b>
General/Manufacturing and Processing/Investment	25.0
General; Active Business Income	26.5

Source: Revenue Canada.

**Alberta's Goods and Services Tax (GST) Rate for 2025 is 5%.**

**Table 19: Corporate Taxes – Canadian Controlled**

Corporate Tax Rates - Canadian Controlled	2025
<b>Combined Federal and Provincial</b>	<b>%</b>
Small Business Income up to \$500,000	12.2
General; Active Business Income	26.5
Investment Income	50.2

Source: Revenue Canada.



Within Table 20, Marginal tax rate for dividends is a percentage of actual dividends received (not grossed-up taxable amount). Marginal tax rate for capital gains is a percentage of total capital gains (not taxable capital gains). Gross-up rate for eligible dividends is 38%, and for non-eligible dividends is 15%.

**Table 20: Personal Income Tax, 2025**

2025 Taxable Income	Other Income	Capital Gains	Canadian Dividends	
			Eligible	Non-Eligible
first \$57,375	22.50%	11.25%	-0.88%	12.98%
over \$57,375 up to \$60,000	28.50%	14.25%	7.40%	19.88%
over \$60,000 up to \$114,750	30.50%	15.25%	10.16%	22.18%
over \$114,750 up to \$151,234	36.00%	18.00%	17.75%	28.51%
over \$151,234 up to \$177,882	38.00%	19.00%	20.51%	30.81%
over \$177,882 up to \$181,481	41.31%	20.66%	25.08%	34.62%
over \$181,481 up to \$241,974	42.31%	21.16%	26.46%	35.77%
over \$241,974 up to \$253,414	43.31%	21.66%	27.84%	36.92%
over \$253,414 up to \$362,961	47.00%	23.50%	32.93%	41.16%
over \$362,961	48.00%	24.00%	34.31%	42.31%

*Marginal tax rate for dividends is a % of actual dividends received (not grossed-up taxable amount).*

*Marginal tax rate for capital gains is a % of total capital gains (not taxable capital gains).*

*Gross-up rate for eligible dividends is 38%, and for non-eligible dividends is 15%.*

### Basic Personal Amount

Level	2025 Amount	2025 Tax Rate
Federal	\$14,543	14.5%
Alberta	\$22,323	8%

Source: [Tax Tips](#).

## Water and Waste Management

The Town of Innisfail receives drinking water from the Red Deer River, via the Mountain View Regional Water Commission water treatment plant.

The town has three pump stations, and three water storage reservoirs with a storage capacity of 2.5 million imperial gallons.

Regarding wastewater, the town is connected to the South Red Deer Regional Wastewater Line. The town’s sanitary sewer collection system consists of a series of 8” and 10” gravity lines, connected to 12” or larger trunk lines as well as 8 wastewater lift stations. The Utilities Department is responsible for the operation of the wastewater sewer system.



**Table 21: Monthly Waterworks Fees**

Water Rates	
Water Consumption Rate	\$3.26/ Per Cubic Meter (m <sup>3</sup> )
Flat Rate	\$10.00/month
Wastewater Rates	
Sewer Rate	\$4.31 \$3.26/ Per Cubic Meter (m <sup>3</sup> ) of water consumed
Flat Rate	\$12.00/month

Source: Town of Innisfail

# 2025 Community Profile

The Innisfail Waste Transfer Station operates Wednesdays and Saturdays from 9 am to 7 PM and is accessible via 37 Street, south of the Innisfail Arena.



**Name of Site:** Innisfail

**Address:** 3660 60 Ave.  
(accessible via 37 Street south of the Innisfail Arena)

**Operation Hours:** Wednesday & Saturday  
9:00 am - 7:00 pm

Type of Waste	1/2-Ton Box: Full Load	1/2-Ton Box: Half Load	8-foot Trailer: Full Load	8-foot Trailer: Half Load	12-foot Trailer (or smaller): Full Load	12-foot Trailer (or smaller): Half Load
Residential Waste	\$35	\$20	\$35	\$20	\$50	\$35
Building Waste	\$35	\$20	\$35	\$20	\$50	\$35
Industrial, Commercial Waste	\$35	\$20	\$35	\$20	\$50	\$35
Commercial Recyclable Materials (paper, plastic, tin, cardboard)	\$25	\$15	\$25	\$15	\$35	\$25

Residential recyclable materials and yard waste removed from its container or plastic bags are accepted at no charge for town residents. Fridge and Freezer waste costs \$45 with Freon or \$25 if Freon-free (with certificate). Furniture is accepted at \$40 per large item or \$20 per small item.

Source: [Town of Innisfail](http://TownofInnisfail.ca).

## Electricity and Natural Gas

### Electricity Service Provider: Fortis Alberta

In Innisfail, Fortis Alberta is the provider of the electrical infrastructure, but there are numerous retailers that residents and businesses may purchase their services from. For a complete list of retailer and price comparisons, please visit the [Utilities Consumer Advocate website](#).

Fortis Alberta Head Office:  
320 - 17 Avenue SW  
Calgary, Alberta, T2S 2V1  
P: 403.310.8043  
fortisalberta.com

Local Branch:  
100 Poplar Street  
Red Deer County, Alberta  
T4E 1B4  
P: 403-554-2608

**Table 22: Electrical Commercial Rates (Effective Jan 2025)**

Transmission Charges			
Component	Billing Unit	kW Rate	kVa Rate
System Usage Charge	Peak Metered		
	Demand (in kW or kVa)	\$0.146925 /kW-day	\$0.1322325 /kVA-day
Capacity Charge	kW (or kVa) of Capacity	\$0.112439 /kW-day	\$0.1011951 /kVA-day
Variable Charge	kWh	\$0.007239 /kWh	
Transmission Charges			
Component	Billing Unit	kW Rate	kVa Rate
System Usage Charge	Peak Metered		
	Demand (in kW or kVa)	\$0.154816 /kW-day	\$0.1393344 /kVA-day
Local Facilities Charge	kW (or kVa) of Capacity	\$0.280322 /kW-day	\$0.2522898 /kVA-day
Service Charge	Daily	\$1.094781 /day	

Source: [Fortis Alberta](#)

## Natural Gas Service Provider: ATCO Gas

In Innisfail, ATCO provides the natural gas infrastructure, but there are numerous retailers that residents and businesses may purchase their services from.

**Table 23: ATCO Natural Gas Distribution - North Delivery Service Rates (Effective 2025)**

	Description	Fixed Charge (\$/daily)	Variable Energy (\$/GJ)	24 Hr Demand (\$/GJ/Day)
Low Use	Delivery Service (<1200 GJ/YR)	0.993	1.043	-
	Transmission Service	-	1.260	-
	Charge Rider T			
Mid Use	Delivery Service (1200-8000 GJ/YR)	1.899	1.026	-
	Transmission Service	-	1.167	-
	Charge Rider T			
High Use	Delivery Service (>8000 GJ/YR)	7.214	-	0.177
	Transmission Service	-	-	0.283
	Charge Rider T			
Ultra High Use	Delivery Service (>100,000 GJ/YR)	8.142	-	.0209
	Transmission Service	-	-	.0330
	Charge Rider T			
ATA	Delivery Service (<40 GJ/YR)	0.461	6.669	-
	Transmission Service	-	1.260	-
	Charge Rider T			
Producer	Delivery Service (injecting gas into system)	182.022	-	0.206
Unmetered Lights	Unmetered Gas Lights (per mantle)	0.099	-	-

Source: [ATCO Gas](#)

ATCO Gas Head Office:  
909 - 11 Avenue SW  
Calgary, Alberta, T2R 1L8  
P: 403.310.5678  
[gas.atco.com](http://gas.atco.com)

Local Branch:  
4940 52 Street  
Innisfail, AB T4G 1S7  
P: 1.888.511.7550

## Communication Infrastructure

Table 24 presents communications infrastructure and service providers for Innisfail. A consistently updated list is available online at [innisfail.ca/public-works/utilities-admin/](https://innisfail.ca/public-works/utilities-admin/).

**Table 24: Communications Infrastructure**

Company Name	Services Provided	Contact
Bell	Satellite TV Phone & Mobile	4900 Molly Bannister Drive Red Deer, Alberta, T4R 1N9 P: 403.755.7042
		5001 19 Street Red Deer, Alberta, T4R 3R1 P: 403.309.9400
		4747 67 Street Red Deer, Alberta, T4N 6H3 P: 403.755.7020  <a href="https://bell.ca/">bell.ca/</a>
Starlink	Satellite Internet	<a href="https://starlink.com/ca">starlink.com/ca</a>
Telus	Internet Cable Phone & Mobile	7434 50 Avenue Red Deer, Alberta, T4P 1X7 P: 403.347.0777
		5125 76A Street Close Red Deer, Alberta, T4P 3M2 P: 403.346.2355

Company Name	Services Provided	Contact
		4747 67 Street Red Deer, Alberta, T4N 6H3 P: 403.309.4300
		4900 Molly Banister Drive Red Deer, Alberta, T4R 1N9 P: 403.309.2700 <a href="https://www.telus.com">telus.com</a>
Xplornet	Wireless Internet	P: 1.877.969.3152 <a href="https://www.xplore.ca">xplore.ca</a>
Rogers (Shaw, Comwave)	Internet Cable Satellite TV Phone & Mobile	4900 Molly Banister Drive, Unit 149B Red Deer, Alberta, T4R 1N9 P: 403.314.5500 <a href="https://www.rogers.com">rogers.com</a>

Source: Town of Innisfail.

**Table 25: Local Media**

Station	Frequency
The Ranch – CKLJ-FM	96.5 FM
Shine FM – CKRD-FM (Red Deer)	90.5 FM
Sunny 94 – CKRD-FM (Lacombe)	94.1 FM
Real Country 95.5 – CKGY-FM (Red Deer)	95.5 FM
98.9 Zed FM – CIZZ-FM (Red Deer)	98.9 FM
X100.7 – CKRI-FM (Red Deer)	100.7 FM
KRAZE 101.3 - CKIK-FM (Red Deer)	101.3 FM
Television Station	Channel
CTV News – Edmonton (Bell Media)	CFRN-DT (Channel 3)
Newspaper	Contact
Mountainview Today	(Free Distribution, Community newspaper)
Red Deer Advocate	2950 Bremner Avenue Red Deer, AB, T4R 1M9 1-403-343-2400 <a href="http://reddeeradvocate.com/">reddeeradvocate.com/</a>

Note: This list is not exhaustive. Please connect with the Town of Innisfail for more information.  
Source: Town of Innisfail.

## Building and Development



### Residential Infill Incentive Program

Innisfail's residential infill incentive program offers developers a grant to help offset fees, etc. tied to infilling properties. Grants can reach up to \$30,000 for properties with 4 or more dwelling units.

Eligible costs include:

- Development and Safety Codes permit fees
- Off-site levies
- Engineering studies (e.g., grading, drainage, geotechnical)
- Hazardous materials survey and abatement
- Water and wastewater service connections (including excavation and water meters)
- Construction, repair, or replacement of sidewalks or roadways related to the development

### The Innisfail Advantage

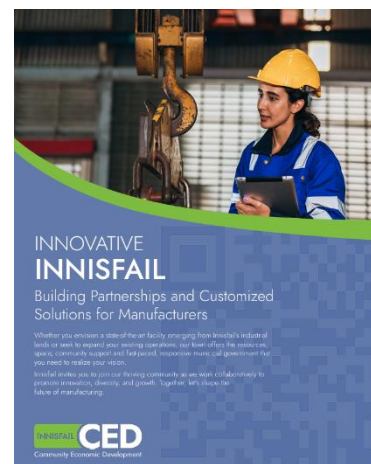
Innisfail's location on the QE2 provides incredible access for local businesses via road transportation. The town is also home to ample serviced, affordable industrial land with easy highway access and no overhead wires or other obstacles for large vehicles.

Innisfail saw over 140 new building permits in 2024, an increase of over 40% from 2023, with total building permit values reaching above \$17 million. Development activity in Innisfail is at its highest level in over a decade, showcasing that opportunities abound as the community grows.

### Target Sectors

Innisfail has done extensive work to become fully investment ready across their target sectors, aggressively pursuing options in:

- Advanced manufacturing, especially as it pertains to the oil and gas and alternative energy sectors.
- Renewable energy and carbon capture.
- Value added agriculture.



## Development Related Fees

Table 26 provides building permit fee structure information for Innisfail.

For further information, please contact:

Town of Innisfail  
 4943 53 Street  
 Innisfail, Alberta, T4G 1A1  
 P: 403-227-3376

**Table 26: Building Permit Fee Structure**

Assessment Review Board Appeal Filing Fee	
Residential - 3 or fewer dwellings and farmland	\$50.00
Residential - 4 or more dwellings	\$650.00
Non-residential	\$650.00
Business Tax	\$50.00
Tax notices (other than business tax)	\$30.00
Linear property -power generation (per facility)	\$650.00
Linear property-other (per Linear Property Assessment Unit Identification)	\$50.00
Equalized assessment	\$650.00

Development Permits	
Residential - Single Family Dwelling, Duplex, Suite Construction, Demolition or Alteration	\$100.00
Residential - Multi-attached Construction or Alteration	\$150.00 for first 3 units plus \$50.00 per unit thereafter
Residential Accessory Building or Structure (garage, shed or deck)	\$50.00
Non-Residential New Construction, Demolition, Alteration or Change of Use	\$150.00
Non-residential Accessory Building, Structure or Accessory Use	\$75.00
Home Occupation 2	\$100.00
Variance Request	Development Permit Fee plus \$100.00
Sign Development Permit	\$50.00
Pre-development Stripping and Grading Permit	\$100.00

## Development Permits

Condominium Plan Review	\$40.00 per unit
Development Permit Revisions	50% of original application, minimum \$50.00
Commencing Development without a Development Permit	Double the applicable development permit fee

## Business Licenses

General Annual - Resident	\$100.00
General Annual - Non-Resident	\$300.00
Daily - Resident (Maximum of 3 consecutive days)	\$30.00 per day
Daily - Non-Resident (Maximum of 3 consecutive days)	\$60.00 per day
Mobile Commercial Sales Annual - Resident	\$100.00
Mobile Commercial Sales Annual - Non-Resident	\$150.00
Early Application Discount (Purchase before December 15)	\$20.00

## Planning Fees

Compliance Certificate (3-5 business days)	\$50.00
Compliance Certificate Rush Service (48 hours)	\$200.00
Land Use Bylaw Confirmation Letter	\$100.00
Land Use Bylaw Amendment	\$1,000.00
Statutory Land Use Plan or Outline Plan Amendment	\$500.00
Subdivision Approval Extension	\$0 First request, \$200 for second and subsequent request
Subdivision or Development Appeal	\$250.00
Road Closure Bylaw	\$1,000.00
Civic Address Map	\$10.00

Source: Town of Innisfail.

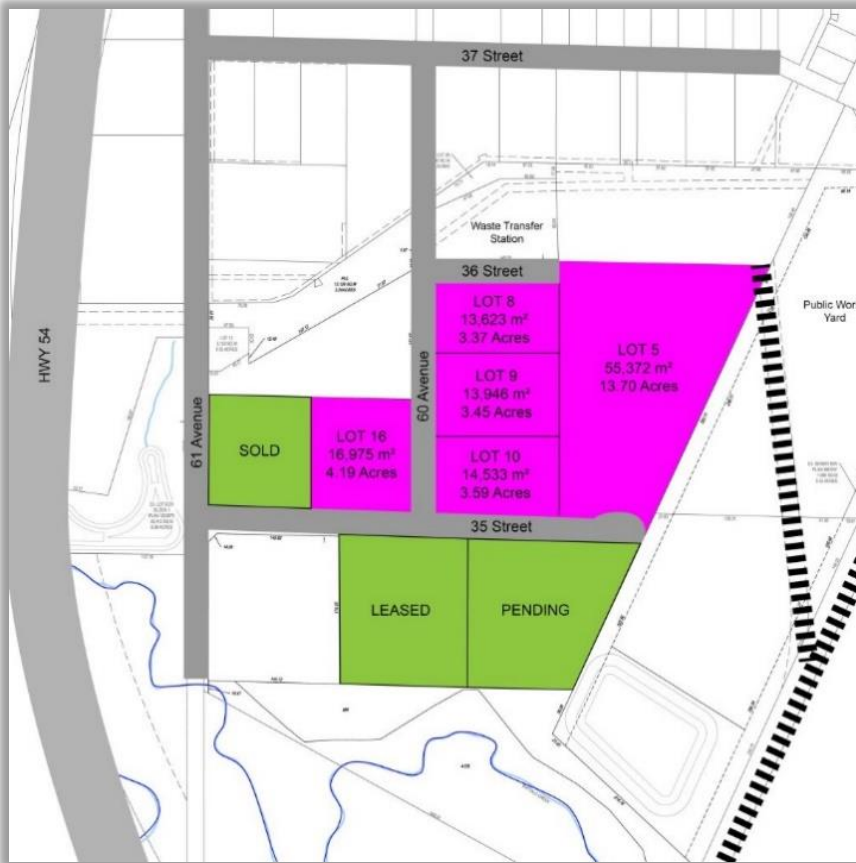
## Business Parks and Land Inventory

Innisfail has ample serviced industrial, commercial/industrial, and residential lands available for development.

To see a current listing of available lands, visit the [Town of Innisfail Website](#).

### Industrial land – Southwest Innisfail

Innisfail's Southwest Industrial Area comprises approximately 123 acres of reclaimed lands south of 37th Street, with 46 acres newly subdivided and designated for industrial sale. The lands are serviced, with paved access roads for all available sites.



For a complete listing of industrial and business properties, please contact:

John Powell

Town of Innisfail

4943 – 53 Street

Innisfail, AB, T4G 1A1

P: 403-227-3376 x217

[innisfail.ca/planning-development/land-lots-for-sale/](http://innisfail.ca/planning-development/land-lots-for-sale/)

## Alberta Regional Dashboard & Site Selector

### [Alberta's Site Selector Tool](#)

is a user-friendly tool combining available property listings in communities across Alberta with insights on local economic conditions, industry data and proximity to crucial infrastructure like rail terminals and power lines. It is helping investors from around the world find available properties in Alberta that are suited to their unique needs.

## Commercial/Industrial land – North Innisfail

North Innisfail offers substantial opportunities for industrial development, centered around the 6360 C & E Trail corridor. A prime 160-acre serviced parcel zoned RD (Reserved for Future Development) is available and positioned at the edge of the town's North Area Structure Plan. Adjacent to this, a 110-acre parcel, also zoned RD and currently agricultural land, is available either on its own or bundled with the larger tract. Together, these two parcels form a massive 270-acre serviced opportunity, with full highway frontage. Given its location and the area structure plan, this land is considered an integral main component of the town's expansion efforts.

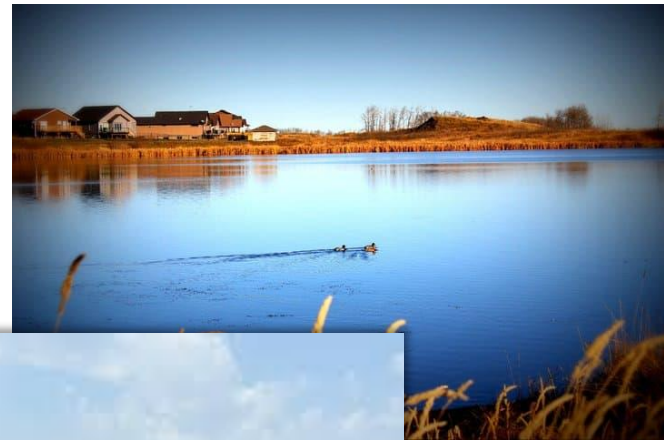


## Residential Lands

Napoleon Lake South sits on a greenfield site just south of Napoleon Lake, between Highway 54 and 60A Avenue Crescent. This subdivision will feature a mix of housing options (e.g., detached homes, duplexes, townhomes, and apartments), with a small commercial component.

Hazelwood Estates is a master-planned, luxury residential community nestled against Dodd's Lake and the Innisfail Golf and Country Club.

Bella Vista's development framework has recently been enhanced to allow higher-density residential zoning (R-4) on two significant parcels, providing the flexibility for future housing configurations.



## Business Support Programs and Services



### CF Central Alberta

Innisfail businesses are able to access the services of Community Futures Central Alberta, which plays a vital role supporting businesses through financing, planning and advisory services, and access to flexible lending.

### CARIN

Central Alberta Regional Innovation Network (CARIN) connects entrepreneurs with expert mentorship, access to funding streams, and specialized programming that helps businesses bring new ideas to market. By fostering a culture of innovation and removing barriers to commercialization, CARIN empowers Central Alberta's business community to compete on a national and global scale.

### Regional Business Support Network

Created in partnership with Community Futures Central Alberta, Town of Olds and Invest Olds, and backed by Prairies Economic Development Canada, the RBSN offers comprehensive services to businesses at any stage in their growth; including strategic guidance, access to funding, business and strategic planning, market analysis, promotional services, marketing and much more.

### Business Retention Expansion & Workforce Development (BREWD)

Central Alberta's BREWD program is designed to help local businesses thrive. In 2025 the BREWD initiative engaged with more than 700 businesses in Innisfail and surrounding communities to support business growth. This initiative was the first phase of the broader Next Generation Economy Initiative, empowering entrepreneurs to shape economic strategy in Innisfail and the broader region.

### Post-Secondary Connections

Innisfail is situated approximately halfway between Olds College and Red Deer Polytechnic, providing local businesses with significant access to a newly graduated labour pool. Both institutions have industry-focused initiatives (e.g., Centre for Innovation in Manufacturing – Technology Access Centre), helping drive growth in labour skills capacity for industries most critical to economic success locally.



## National, Provincial and Municipal Support

The following organizations support businesses by facilitating commercialization, workforce development, research and development, export growth and, raising capital funding. For a complete list of funding, grants and tax credits available to businesses locating in Innisfail please see Appendix B.

**Table 27: National and Provincial Support Organizations**

Federal Departments/National Agencies	
Name	URL
Federation of Canadian Municipalities	<a href="http://fcm.ca/home.htm">fcm.ca/home.htm</a>
Futurpreneur Canada	<a href="http://futurpreneur.ca/en/">futurpreneur.ca/en/</a>
Business Development Bank of Canada	<a href="http://bdc.ca/en/pages/home.aspx">bdc.ca/en/pages/home.aspx</a>
Canada Business - Business Start-up Assistant	<a href="http://canada.ca/en/services/business/start/support-financing.html">canada.ca/en/services/business/start/support-financing.html</a>
Business Development Bank of Canada	<a href="http://bdc.ca/en/pages/home.aspx">bdc.ca/en/pages/home.aspx</a>
Export Development Canada	<a href="http://edc.ca/en/Pages/default.aspx">edc.ca/en/Pages/default.aspx</a>
Innovation, Science and Economic Development Canada	<a href="http://ic.gc.ca/eic/site/icgc.nsf/eng/home">ic.gc.ca/eic/site/icgc.nsf/eng/home</a>
Economic Developers Association of Canada	<a href="http://edac.ca/">edac.ca/</a>
Canadian Business Network	<a href="http://canadabusiness.ca/eng/">canadabusiness.ca/eng/</a>
Canada Post	<a href="http://canadapost.ca">canadapost.ca</a>
Fundica	<a href="http://fundica.com/">fundica.com/</a>
CoopZone	<a href="http://coopzone.coop/">coopzone.coop/</a>
Tools and Financing for Aboriginal Business	<a href="http://ccab.com/tfab/">ccab.com/tfab/</a>

Provincial Departments/Agencies	
Name	URL
Alberta Ministry of Agriculture, Forestry and Rural Economic Development	<a href="http://alberta.ca/agriculture-forestry-and-rural-economic-development.aspx">alberta.ca/agriculture-forestry-and-rural-economic-development.aspx</a>
Alberta Ministry of Infrastructure	<a href="http://alberta.ca/infrastructure.aspx">alberta.ca/infrastructure.aspx</a>
Alberta Ministry of Labour and Immigration	<a href="http://alberta.ca/labour-and-immigration.aspx">alberta.ca/labour-and-immigration.aspx</a>
Alberta Ministry of Municipal Affairs	<a href="http://alberta.ca/municipal-affairs.aspx">alberta.ca/municipal-affairs.aspx</a>
Alberta Ministry of Jobs, Economy & Innovation	<a href="http://alberta.ca/jobs-economy-and-innovation.aspx">alberta.ca/jobs-economy-and-innovation.aspx</a>

Table 28 presents information for relevant local and regional support organizations.

**Table 28: Local/Regional Support Organizations**

Regional/Local/Other Departments/Agencies	
Name	URL
Inno-Tech Alberta	<a href="http://innotechalberta.ca/">innotechalberta.ca/</a>
Business Link	<a href="http://businesslink.ca/">businesslink.ca/</a>
Alberta Women Entrepreneurs	<a href="http://awebusiness.com/">awebusiness.com/</a>
Community Futures Central Alberta	<a href="http://central.albertacf.com/">central.albertacf.com/</a>
Business Retention, Expansion and Workforce Development (BREWD)	<a href="http://centralalbertafirst.ca/">centralalbertafirst.ca/</a>
Economic Development Alberta	<a href="http://edaalberta.ca/">edaalberta.ca/</a>
Alberta Chambers of Commerce, AB	<a href="http://abchamber.ca/">abchamber.ca/</a>
Alberta Innovates	<a href="http://albertainnovates.ca/">albertainnovates.ca/</a>
Innisfail & District Chamber of Commerce	<a href="http://innisfailchamber.org/">innisfailchamber.org/</a>
Western Economic Diversification Canada	<a href="http://wd-deo.gc.ca/eng/home.asp">wd-deo.gc.ca/eng/home.asp</a>
Alberta's agri-food industry	<a href="http://alberta.ca/agri-food.aspx">alberta.ca/agri-food.aspx</a>

Regional/Local/Other Departments/Agencies	
Name	URL
Central Alberta Economic Partnerships	<a href="http://caepalberta.com/">caepalberta.com/</a>
Central Alberta Regional Innovation Network (CARIN)	<a href="http://ca-rin.ca/">ca-rin.ca/</a>
Alberta Small Business Resources	<a href="http://smallbusiness.alberta.ca/">smallbusiness.alberta.ca/</a>

## Post-Secondary Education, Employment and Training

The following are only a subset of the many recognized universities and colleges in the region. A comprehensive list of Alberta colleges and universities can be found [here](#).

**Table 29: Education, Employment and Training Centres**

Institution Name	Key Programs	Location/contact
Burman University	35 major or track choices in bachelor’s degree programs in their Division of Arts, Division of Science, School of Business, and School of Education.	6730 University Dr, Lacombe, AB T4L 2E5  (403) 782-3381
Red Deer Polytechnic	RDC offers more than 100 different credit programs, housed in seven Schools: trades, certificates, diplomas, graduate certificates and applied degrees	100 College Blvd, Red Deer, AB T4N 5H5  (403) 342-3300
Olds College	Delivers a variety of certificate, diploma and applied degree options as well as trades and apprenticeship training.	4500 50 St, Olds, AB  (403) 556-8281

Source: McSweeney and Associates and Town of Innisfail.

## Community Living



### Community Assets

Innisfail offers a wide range of recreational amenities, including an arena, curling club, aquatic centre, and spray park, providing activities for residents of all ages, from young families to older adults and teenagers. The community's extensive parks and trail system also ensures easy access to nature and outdoor recreation year-round.

### Festivals and Events

There are exciting and varied events year-round, including:

- Skatepark Trick Competition
- Innisfail Lions Soapbox Derby
- Harvest Festival
- Festival of Trees
- Mayor's Garden Party
- Countdown to Christmas

### Quality of Life

The Innisfail region features a range of tourism attractions that draw visitors from across Alberta and beyond each year. The town offers a mix of historical sites, local retail and dining options, and access to natural amenities.

Among its most well-known attractions is the Discovery Wildlife Park, which offers wildlife experiences and education programs. In addition, the community features an active retail district, a 27-hole golf course (which hosted the 2024 Canadian Junior Boys Championship), a network of walking trails, and several parks, providing opportunities for day visits and local exploration. Finally, Innisfail is home to a number of unique experiences, including the Innisfail Pro Rodeo (mid-June), the Discovery Institute of Nature, Origins and Science (DINOS) Centre, and the Innisfail Ski Hill.

These assets contribute to Innisfail's appeal as a tourism destination within Central Alberta.

## Social and Community Services



### Royal Canadian Mounted Police (RCMP)

4904 45 Avenue  
Innisfail, Alberta, T4G 1S6

(403) 227-3342 or 911 (emergency)



### Policing & Safe Community Committee

The Policing & Safe Community Committee acts as a link between Innisfail Town Council, Innisfail RCMP, Community Peace Officers, community members, and other stakeholders



### Innisfail Fire Department

4949 49 Street  
Innisfail, Alberta, T4G 1A5

(403) 227-3376 or 911 (emergency)



### Alberta Health Services

Ambulance services within the Town of Innisfail fall under Alberta Health Services, serviced locally by Medavie.

For emergency services, call 911



Health Care Services	
Resource	Service Provider Contact
Innisfail Health Centre	5023 42 Street, Innisfail, AB, T4G 1A9 403-227-7800 Emergency Department Open 24 hours
Red Deer Regional Hospital Centre	3942 50a Ave, Red Deer, AB T4N 4E7 (403) 343-4422 Emergency Department Open 24 hours
Alberta Blue Cross	103 5002 55 Street, Red Deer (800) 661-6995
Pregnancy Care Centre – Central Alberta	5116 47 Street, Red Deer (403) 343-1738
Red Deer Hospice Society	99 Amot Avenue, Red Deer (403) 309-4344
Red Deer Respiriology Group	160 6900 Taylor Dr, Red Deer, AB T4P 1K4 (403) 342-2234
Central Alberta Cancer Centre	3942 50a Ave, Red Deer, AB T4N 4E7 (403) 343-4422
Peak Medical Specialty Centres	5440 45 St #200, Red Deer, AB T4N 1L1 (587) 797-1937
Canadian Mental Health Association	5017 50 Ave, Red Deer, AB T4N 4B2 (403) 342-2266

## Education

Innisfail is served by both public (Chinook’s Edge School Division) and Catholic (Red Deer Catholic Regional School Division) school systems, offering education from kindergarten through Grade 12 within the community. Local schools provide a range of academic, athletic, and extracurricular programs to support student development. As noted earlier, the town’s proximity to post-secondary institutions in both Olds and Red Deer further expands educational opportunities for current and potential residents.

### Schools Servicing Innisfail Youth

Schools	
St. Marguerite Bourgeoys School	4453 51 Avenue Innisfail, Alberta, T4G 1A7 403-227-2123 <a href="http://stmarguerite.ca/">stmarguerite.ca/</a>
École John Wilson Elementary School	4401 52 Avenue Innisfail, Alberta, T4G 1A7 403-227-3292 <a href="http://johnwilsonschool.ca/">johnwilsonschool.ca/</a>
Innisfail Middle School	4501 52 Avenue Innisfail, Alberta, T4G 1A7 403-227-0060 <a href="http://innisfailmiddle.ca/">innisfailmiddle.ca/</a>
Innisfail High School/Career High School	4459 51 Avenue Innisfail, Alberta, T4G 1L7 403-227-3244 <a href="http://innisfailhigh.ca/">innisfailhigh.ca/</a>

### Innisfail Public Library

The Innisfail Public Library has served the town since 1904. The current structure was built in 2012 and includes a 3,900 sq ft community room. The library, through the Parkland Regional Library System, offers access to library services across central Alberta.

Building on its plethora of core services (e.g., free Wi-Fi, interlibrary loans, borrowing by mail, and alternate-format materials for accessibility) the library’s presence extends into the community extensively. This presence includes outreach like the network of “Little Free Libraries” scattered across town (managed by volunteers) allowing free book exchanges in neighborhoods and parks across Innisfail.

## Recreational Facilities

No matter the season, there is always something happening that will get you and your family active and involved in the community! Innisfail’s Parks and Trail Systems provide lots of space for a wide variety of recreational activities. The community’s recreational facilities are listed below. For a complete list of recreation programs and social clubs, please visit the [Innisfail website](https://www.innisfail.ca).

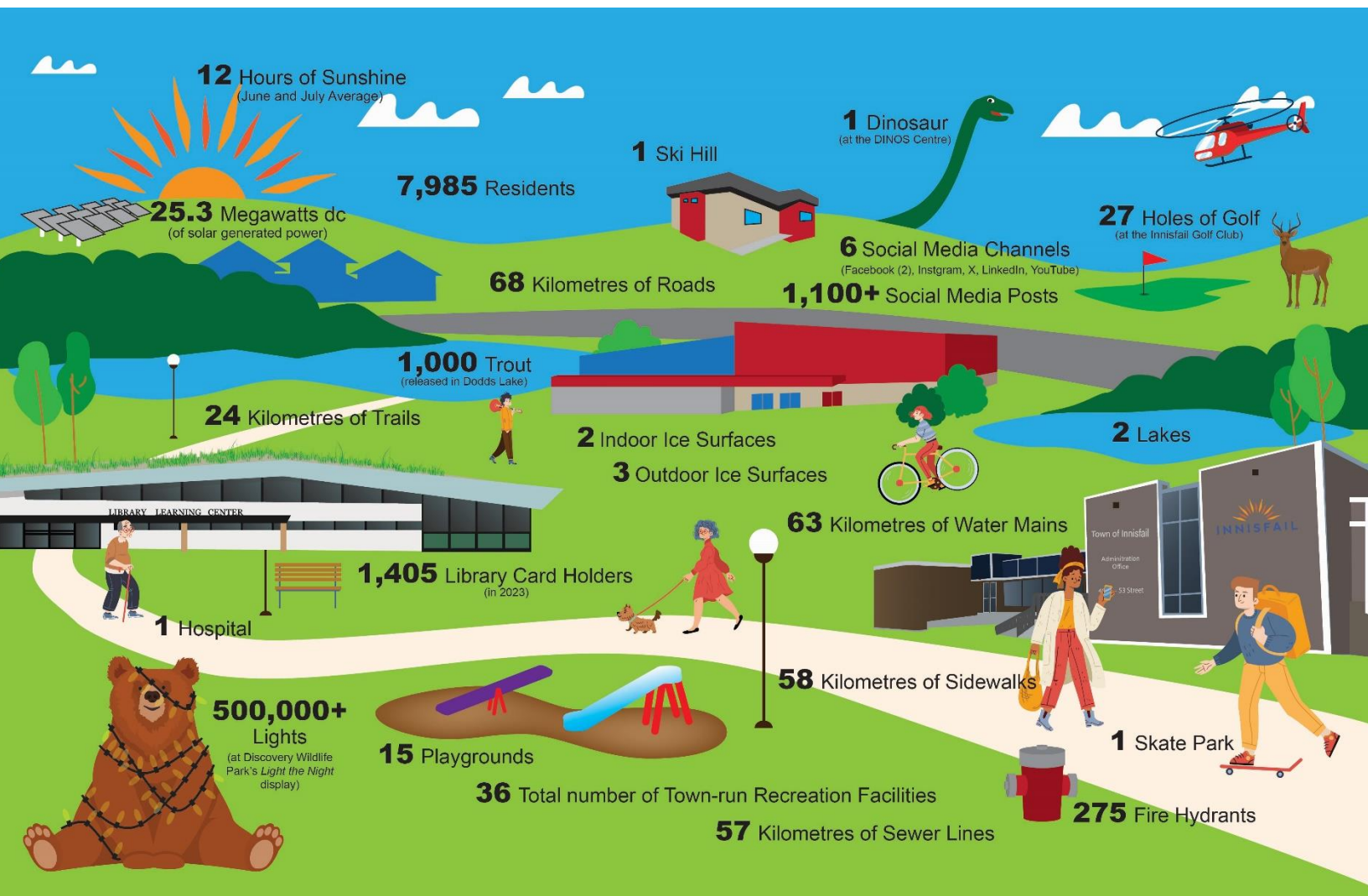
For a complete list of Innisfail’s park areas and open spaces, a downloadable PDF map is available [here](#).



Name	Contact
Innisfail Arena	5804 – 42 Street Innisfail, Alberta, T4G 1S7 403.227.2735 <a href="mailto:arena@innisfail.ca">arena@innisfail.ca</a>
Innisfail Curling Club	5704 - 42 Street Innisfail, Alberta, T4G 1S7 <a href="https://www.innisfailcurlingclub.com/">innisfailcurlingclub.com/</a>
Innisfail Aquatic Centre – Currently under Renovations as of Summer 2025	5117 42 Street Innisfail, Alberta, T4G 1K2 <a href="https://www.innisfail.ca/recreation/aquatic-centre-spray-park/">innisfail.ca/recreation/aquatic-centre-spray-park/</a>
Innisfail Spray Park – Open during renovations	5117 42 Street Innisfail, Alberta, T4G 1K2 <a href="https://www.innisfail.ca/recreation/aquatic-centre-spray-park/">innisfail.ca/recreation/aquatic-centre-spray-park/</a>
Innisfail Library & Learning Centre (with Community Room)	5300 A 55th Street Close Innisfail, Alberta, T4G 1R6 403.227.4407 <a href="https://www.innisfail.ca/recreation/library-learning-centre/">innisfail.ca/recreation/library-learning-centre/</a>

# 2025 Community Profile

Name	Contact
Centennial Park	Located at the corner of 60 Avenue and 50 Street
Innisfail Skatepark	42 Street and 51 Avenue



## Events and Tourism

The town of Innisfail is a community full of heritage and charm. Visitors can tour the local museum, play a few holes at the world-class Golf Club, or get their picture taken with a bear at the Wildlife Park! If that wasn't enough, the community hosts dozens of events annually for residents and visitors to enjoy, as well as professional rodeo. With several campgrounds and lodges, visitors have no shortage of accommodations for their stay. Visit the [Innisfail website](https://www.innisfail.ca) to learn about all the attractions on offer.

### Innisfail & District Historical Village

One of the largest museums in Central Alberta, the Historical Village also hosts numerous special events during summer months. The "Stopping House" at the museum is the only preserved stopping house from the days of stagecoach travel on the historic C & E Trail.

### Discovery Wildlife Park

What is Discovery Wildlife Park? Only the most exciting wildlife facility you'll ever visit! What does it do that's so different? It provides 'forever' homes for orphaned wildlife and any zoo animals in need of a home! Daily presentations with amazing animals make the facility unique in the zoo world. Check it out today!

### Innisfail Golf Club

Central Alberta's #1 Public Golf Destination offers 27 breathtaking holes, nestled within our scenic greens. Discover three meticulously crafted 9-hole courses—Aspen, Hazelwood, and Spruce—each offering a unique challenge tailored to golfers of all levels.



## Local Institutions

Table 30 outlines financial institutions local to Innisfail while Table 31 outlines real estate institutions.

**Table 30: Financial Institutions Servicing Innisfail**

Office	Address	Contact	Website
<b>ATB Financial</b>	4962 50 St, Innisfail, AB T4G 1S7	403-227-3350	<a href="http://atb.com">atb.com</a>
<b>Royal Bank of Canada</b>	4962 52 St, Innisfail, AB T4G 1W6	403-227-3307	<a href="http://rbcroyalbank.com">rbcroyalbank.com</a>
<b>Scotiabank</b>	4949 50 St, Innisfail, AB T4G 1N2	403-227-3321	<a href="http://scotiabank.com">scotiabank.com</a>
<b>Servus Credit Union</b>	4415 50 St, Innisfail, AB T4G 1P3	1-888-233-9583	<a href="http://Servus.ca">Servus.ca</a>

Source: Town of Innisfail

**Table 31: Real Estate Offices Servicing Innisfail**

Office	Locations	Phone	Website
<b>Re/MAX</b>	5008 50th Street Innisfail, AB T4G 1S8	403-348-9218	<a href="http://remax.ca/ab/innisfail-real-estate">remax.ca/ab/innisfail-real-estate</a>
<b>Royal LePage</b>	4923 50 St, Innisfail, AB T4G 1W4	403-227-3225	<a href="http://royallepage.ca/en/ab/innisfail/properties/">royallepage.ca/en/ab/innisfail/properties/</a>
<b>Sun Dance Realty</b>	#2, 5215 49 Ave, Innisfail, AB T4G 1B3	403-227-1999	<a href="http://sundance-realty.com/">sundance-realty.com/</a>

Source: Town of Innisfail



## Appendix A – General Wages by Occupation

Table 32 provides a sampling of local wage rates of the highest paying occupations (by average wage) for the closest and most representative region available (Red Deer Region, Alberta). For more wage rates please visit [Canada Job Bank](https://www.calgaryjobs.ca/).

**Table 32: General Wages (Red Deer Region, Alberta) by Occupation**

Category	Low Wage (\$/hr)	Average Wage (\$/hr)	High Wage (\$/hr)
Engineering managers (20010)	\$34.93	\$70.31	\$138.80
Corporate sales managers (60010)	\$36.06	\$60.00	\$94.04
Chemical engineers (21320)	\$37.50	\$57.69	\$96.15
Supervisors, petroleum, gas and chemical processing and utilities (92011)	\$37.62	\$57.23	\$88.21
Human resources managers (10011)	\$34.19	\$56.25	\$93.75
Industrial instrument technicians and mechanics (22312)	\$27.27	\$55.00	\$63.00
Managers in health care (30010)	\$28.85	\$52.88	\$71.89
Mechanical engineers (21301)	\$30.00	\$52.78	\$72.00
Banking, credit and other investment managers (10021)	\$34.87	\$52.40	\$86.06
Business development officers and market researchers and analysts (41402)	\$30.00	\$51.92	\$72.37
School principals and administrators of elementary and secondary education (40021)	\$27.00	\$51.28	\$63.94
Pharmacists (31120)	\$25.00	\$50.50	\$62.99

Engineering inspectors and regulatory officers (22231)	\$27.40	\$50.48	\$74.04
Manufacturing managers (90010)	\$31.25	\$49.52	\$77.40
Information systems specialists (21222)	\$28.85	\$48.34	\$72.12
Construction managers (70010)	\$33.65	\$48.08	\$87.50
Managers in transportation (70020)	\$32.00	\$48.08	\$72.12
Respiratory therapists, clinical perfusionists and cardiopulmonary technologists (32103)	\$38.00	\$48.00	\$53.00
Electrical and electronics engineers (21310)	\$28.85	\$47.26	\$74.52
Contractors and supervisors, machining, metal forming, shaping and erecting trades and related occupations (72010)	\$27.00	\$47.00	\$60.20
Secondary school teachers (41220)	\$32.05	\$46.15	\$55.49
Contractors and supervisors, oil and gas drilling and services (82021)	\$28.00	\$46.15	\$62.50
Contractors and supervisors, pipefitting trades (72012)	\$29.00	\$46.10	\$58.29
Software developers and programmers (21232)	\$30.00	\$45.88	\$67.14
Registered nurses and registered psychiatric nurses (31301)	\$30.52	\$45.00	\$53.00
Medical radiation technologists (32121)	\$35.00	\$44.75	\$51.79
Contractors and supervisors, mechanic trades (72020)	\$26.00	\$44.63	\$64.00
Industrial electricians (72201)	\$32.00	\$44.50	\$65.00
Public and environmental health and safety professionals (21120)	\$23.00	\$44.42	\$72.00
Police officers (except commissioned) (42100)	\$34.50	\$44.31	\$54.87
Facility operation and maintenance managers (70012)	\$27.00	\$43.75	\$64.90
Occupational therapists (31203)	\$39.00	\$43.33	\$52.36

Occupational health and safety specialists (22232)	\$24.00	\$42.86	\$64.00
Probation and parole officers (41311)	\$33.79	\$41.10	\$47.18
Construction estimators (22303)	\$28.85	\$40.87	\$69.71
Natural and applied science policy researchers, consultants and program officers (41400)	\$27.50	\$40.87	\$54.87
Heavy-duty equipment mechanics (72401)	\$35.00	\$40.50	\$55.00
Education policy researchers, consultants and program officers (41405)	\$23.08	\$40.00	\$52.89
Managers in customer and personal services (60040)	\$15.00	\$40.00	\$62.50
Sales and account representatives - wholesale trade (non-technical) (64101)	\$27.88	\$40.00	\$51.28
Contractors and supervisors, electrical trades and telecommunications occupations (72011)	\$29.33	\$40.00	\$56.00
Steamfitters, pipefitters and sprinkler system installers (72301)	\$26.00	\$40.00	\$48.00
Oil and gas well drillers, servicers, testers and related workers (83101)	\$17.17	\$40.00	\$59.38
Social policy researchers, consultants and program officers (41403)	\$26.00	\$39.97	\$60.00
College and other vocational instructors (41210)	\$23.50	\$39.96	\$55.00
Human resources professionals (11200)	\$23.08	\$39.90	\$59.20
Financial auditors and accountants (11100)	\$26.00	\$39.50	\$66.35
Elementary school and kindergarten teachers (41221)	\$24.53	\$39.47	\$51.10
Procurement and purchasing agents and officers (12102)	\$25.00	\$39.41	\$69.71
Social workers (41300)	\$23.56	\$39.39	\$51.24
Construction millwrights and industrial mechanics (72400)	\$24.50	\$39.21	\$62.50
Insulators (72321)	\$25.96	\$39.00	\$46.18
Managers in social, community and correctional services (40030)	\$25.00	\$38.65	\$57.69

Contractors and supervisors, carpentry trades (72013)	\$25.00	\$38.64	\$53.00
Oil and gas well drilling and related workers and services operators (84101)	\$29.16	\$38.50	\$45.50
Computer network and web technicians (22220)	\$20.92	\$38.46	\$52.20
Therapists in counselling and related specialized therapies (41301)	\$22.45	\$38.00	\$54.00
Telecommunications equipment installation and cable television service technicians (72205)	\$25.00	\$38.00	\$43.96
Financial advisors (11102)	\$26.37	\$37.50	\$72.12
Mechanical engineering technologists and technicians (22301)	\$18.03	\$37.32	\$46.15
Sheriffs and bailiffs (43200)	\$18.75	\$37.29	\$43.02
Correctional service officers (43201)	\$27.00	\$36.30	\$50.00
Non-destructive testers and inspectors (22230)	\$21.13	\$36.00	\$52.71
Heating, refrigeration and air conditioning mechanics (72402)	\$22.00	\$36.00	\$52.00
Automotive service technicians, truck and bus mechanics and mechanical repairers (72410)	\$23.08	\$36.00	\$42.00
Retail and wholesale trade managers (60020)	\$24.04	\$35.38	\$57.69
Insurance agents and brokers (63100)	\$23.08	\$35.38	\$48.08
Paramedical occupations (32102)	\$27.00	\$35.00	\$49.52
Welders and related machine operators (72106)	\$21.63	\$35.00	\$46.03
Agricultural and fish products inspectors (22111)	N/A	\$34.21	N/A
Executive assistants (12100)	\$23.21	\$33.65	\$41.52
Electrical and electronics engineering technologists and technicians (22310)	\$26.44	\$33.65	\$56.00
Financial sales representatives (63102)	\$19.23	\$32.50	\$56.41
User support technicians (22221)	\$20.00	\$32.21	\$47.18

Carpenters (72310)	\$21.00	\$32.00	\$41.47
Professional occupations in advertising, marketing and public relations (11202)	\$20.00	\$31.25	\$51.79
Legal administrative assistants (13111)	\$18.75	\$31.15	\$42.50
Heavy equipment operators (73400)	\$23.00	\$31.00	\$39.16
Oil and gas drilling, servicing and related labourers (85111)	\$23.00	\$31.00	\$39.00
Civil engineering technologists and technicians (22300)	\$19.78	\$30.05	\$45.67
Supervisors, general office and administrative support workers (12010)	\$18.36	\$30.00	\$43.27
Licensed practical nurses (32101)	\$26.00	\$30.00	\$36.00
Transport truck drivers (73300)	\$21.00	\$30.00	\$44.00
Contractors and supervisors, landscaping, grounds maintenance and horticulture services (82031)	\$21.00	\$29.81	\$50.00
Payroll administrators (13102)	\$18.46	\$29.78	\$42.10
Production and transportation logistics coordinators (13201)	\$22.42	\$29.03	\$57.69
Supervisors, supply chain, tracking and scheduling coordination occupations (12013)	\$19.00	\$29.00	\$51.00
Concrete finishers (73100)	\$22.50	\$29.00	\$34.00
Public works maintenance equipment operators and related workers (74205)	\$22.00	\$29.00	\$42.09
Medical administrative assistants (13112)	\$21.80	\$28.30	\$34.00
Accounting technicians and bookkeepers (12200)	\$19.23	\$28.21	\$48.46
Roofers and shinglers (73110)	\$20.00	\$28.00	\$36.00
Letter carriers (74101)	\$22.00	\$28.00	\$38.36
Storekeepers and partspersons (14401)	\$16.15	\$27.93	\$47.97
Accounting and related clerks (14200)	\$17.31	\$27.25	\$43.75

Dispatchers (14404)	\$20.00	\$27.00	\$46.00
Electronic service technicians (household and business equipment) (22311)	\$18.00	\$26.52	\$44.23
Religious leaders (41302)	\$18.00	\$26.25	\$34.62
Residential and commercial installers and servicers (73200)	\$20.00	\$26.25	\$43.21
Labourers in metal fabrication (95101)	\$19.00	\$25.80	\$34.50
Administrative assistants (13110)	\$15.00	\$25.24	\$30.00
Social and community service workers (42201)	\$18.95	\$25.05	\$49.73
General office support workers (14100)	\$18.00	\$25.00	\$36.67
Animal health technologists and veterinary technicians (32104)	\$19.00	\$25.00	\$35.71
Restaurant and food service managers (60030)	\$17.00	\$25.00	\$45.67
Painters and decorators (except interior decorators) (73112)	\$19.00	\$25.00	\$32.00
Managers in agriculture (80020)	\$20.00	\$25.00	\$90.87
Other technical occupations in therapy and assessment (32109)	\$17.00	\$24.71	\$30.00
Administrative officers (13100)	\$15.00	\$24.62	\$37.00
Pharmacy technical assistants and pharmacy assistants (33103)	\$16.41	\$24.56	\$31.78
Elementary and secondary school teacher assistants (43100)	\$17.68	\$24.00	\$25.00
General building maintenance workers and building superintendents (73201)	\$16.15	\$24.00	\$34.00
Construction trades helpers and labourers (75110)	\$19.00	\$24.00	\$35.00
Industrial painters, coaters and metal finishing process operators (94213)	\$18.50	\$23.25	\$35.00
Data entry clerks (14111)	\$15.00	\$23.00	\$32.50
Industrial butchers and meat cutters, poultry preparers and related workers (94141)	\$15.00	\$22.60	\$26.00

Receptionists (14101)	\$17.00	\$22.00	\$27.50
Landscape and horticulture technicians and specialists (22114)	\$17.00	\$22.00	\$28.20
Nurse aides, orderlies and patient service associates (33102)	\$18.00	\$22.00	\$26.15
Other customer and information services representatives (64409)	\$15.50	\$22.00	\$33.33
Other repairers and servicers (73209)	\$16.50	\$22.00	\$42.00
Material handlers (75101)	\$16.00	\$22.00	\$31.73
Specialized livestock workers and farm machinery operators (84120)	\$15.00	\$22.00	\$32.00
Couriers and messengers (74102)	\$15.00	\$21.49	\$44.64
Shippers and receivers (14400)	\$19.50	\$21.35	\$28.00
Chefs (62200)	\$15.00	\$21.00	\$28.00
Bus drivers, subway operators and other transit operators (73301)	\$16.65	\$20.86	\$35.00
Other assisting occupations in support of health services (33109)	\$17.50	\$20.77	\$26.00
Home support workers, caregivers and related occupations (44101)	\$17.13	\$20.00	\$25.00
Retail sales supervisors (62010)	\$16.25	\$20.00	\$41.20
Customer services representatives - financial institutions (64400)	\$18.00	\$20.00	\$28.08
Security guards and related security service occupations (64410)	\$15.00	\$20.00	\$36.06
Specialized cleaners (65311)	\$15.00	\$20.00	\$35.00
Janitors, caretakers and heavy-duty cleaners (65312)	\$15.00	\$20.00	\$24.00
Delivery service drivers and door-to-door distributors (75201)	\$15.00	\$20.00	\$33.00
Livestock labourers (85100)	\$15.00	\$20.00	\$30.00
Landscaping and grounds maintenance labourers (85121)	\$16.00	\$20.00	\$26.49

Other labourers in processing, manufacturing and utilities (95109)	\$17.00	\$20.00	\$26.00
Labourers in food and beverage processing (95106)	\$15.45	\$19.95	\$23.50
Program leaders and instructors in recreation, sport and fitness (54100)	\$15.50	\$19.35	\$32.00
Bakers (63202)	\$15.00	\$18.50	\$25.00
Early childhood educators and assistants (42202)	\$15.69	\$18.00	\$24.99
Hairstylists and barbers (63210)	\$15.00	\$18.00	\$23.00
Light duty cleaners (65310)	\$15.00	\$18.00	\$22.00
Food service supervisors (62020)	\$16.80	\$17.50	\$32.00
Retail salespersons and visual merchandisers (64100)	\$15.00	\$17.50	\$38.46
Cooks (63200)	\$15.00	\$17.00	\$22.00
Hotel front desk clerks (64314)	\$16.00	\$17.00	\$20.00
Food and beverage servers (65200)	\$15.50	\$17.00	\$24.00
Pet groomers and animal care workers (65220)	\$15.00	\$17.00	\$32.50
Store shelf stockers, clerks and order fillers (65102)	\$15.00	\$16.00	\$17.55
Food counter attendants, kitchen helpers and related support occupations (65201)	\$15.00	\$15.50	\$20.50
Cashiers (65100)	\$15.00	\$15.00	\$16.00

Source: Produced by Human Resources and Skills Development Canada's Labour Market Information Service, Report generated on December 3, 2024.



## Appendix B – Provincial and Federal Incentives

### Provincial Programs

Table 33 presents available provincial funding opportunities for local businesses alongside web links.

**Table 33: Provincial Funding**

Provincial Program Opportunities	
Program	Website
Alberta Broadband Fund	<a href="https://alberta.ca/alberta-broadband-fund">alberta.ca/alberta-broadband-fund</a>
Alberta Community Resilience Program	<a href="https://alberta.ca/alberta-community-resilience-program">alberta.ca/alberta-community-resilience-program</a>
Alberta Export Expansion Program	<a href="https://alberta.ca/alberta-export-expansion-program">alberta.ca/alberta-export-expansion-program</a>
Coal Community Transition Fund	<a href="https://alberta.ca/coal-community-transition-fund">alberta.ca/coal-community-transition-fund</a>
Aboriginal Business Investment Fund	<a href="https://alberta.ca/aboriginal-business-investment-fund">alberta.ca/aboriginal-business-investment-fund</a>
Alberta Indigenous Opportunities Corporation	<a href="https://theaioc.com/what-we-offer/services/loan-guarantees/">theaioc.com/what-we-offer/services/loan-guarantees/</a>
First Nations Development Fund	<a href="https://alberta.ca/first-nations-development-fund-grant-program">alberta.ca/first-nations-development-fund-grant-program</a>

Provincial Program Opportunities	
Program	Website
Indigenous Reconciliation Initiative	<a href="https://alberta.ca/indigenous-reconciliation-initiative-economic-stream">alberta.ca/indigenous-reconciliation-initiative-economic-stream</a>
Northern and Regional Economic Development Program	<a href="https://alberta.ca/northern-and-regional-economic-development-program">alberta.ca/northern-and-regional-economic-development-program</a>
Small Community Opportunity Program	<a href="https://alberta.ca/small-community-opportunity-program">alberta.ca/small-community-opportunity-program</a>

### Federal Programs

Table 34 presents available capital funding opportunities for local businesses alongside web links.

**Table 34: Capital Funding**

Capital Funding Program Opportunities	
Program	Website
AgriCompetitiveness Program	<a href="https://agriculture.canada.ca/en/agricultural-programs-and-services/agricompetitiveness-program">agriculture.canada.ca/en/agricultural-programs-and-services/agricompetitiveness-program</a>
AgriScience Program - Projects	<a href="https://agriculture.canada.ca/en/agricultural-programs-and-services/agriscience-program-projects">agriculture.canada.ca/en/agricultural-programs-and-services/agriscience-program-projects</a>
Business Development Bank of Canada (BDC)	<a href="https://bdc.ca/en">bdc.ca/en</a>
Canada Small Business Financing Program - Industry Canada	<a href="https://ic.gc.ca/eic/site/csbf-pfpec.nsf/eng/Home">ic.gc.ca/eic/site/csbf-pfpec.nsf/eng/Home</a>

Capital Funding Program Opportunities	
Program	Website
Aboriginal Entrepreneurship Program (AEP)	<a href="https://sac-isc.gc.ca/eng/1375201178602/16107972862362?utm_source=bbf-orae&amp;utm_medium=website&amp;utm_campaign=FTF&amp;utm_term=business_benefits_finder-outil_recherche_aide_aux_entreprises">sac-isc.gc.ca/eng/1375201178602/16107972862362?utm_source=bbf-orae&amp;utm_medium=website&amp;utm_campaign=FTF&amp;utm_term=business_benefits_finder-outil_recherche_aide_aux_entreprises</a>
Futurpreneur Canada	<a href="https://futurpreneur.ca/">futurpreneur.ca/</a>
Futurpreneur Canada Newcomer Program	<a href="https://futurpreneur.ca/en/get-started/financing-and-mentoring/newcomer/">futurpreneur.ca/en/get-started/financing-and-mentoring/newcomer/</a>
OBIO® Capital Access Advisory Program (CAAP®)	<a href="https://obio.ca/obiocaap?utm_source=bbf-orae&amp;utm_medium=website&amp;utm_campaign=FTF&amp;utm_term=business_benefits_finder-outil_recherche_aide_aux_entreprises">obio.ca/obiocaap?utm_source=bbf-orae&amp;utm_medium=website&amp;utm_campaign=FTF&amp;utm_term=business_benefits_finder-outil_recherche_aide_aux_entreprises</a>
EDC Inclusive Trade Investments Program (ITIP)	<a href="https://edc.ca/en/solutions/financing/investments/inclusive-trade-investments-program.html?utm_source=canada-business-app&amp;utm_medium=partner-link&amp;utm_campaign=ac-core_content&amp;utm_content=link_isedbbfitip_e">edc.ca/en/solutions/financing/investments/inclusive-trade-investments-program.html?utm_source=canada-business-app&amp;utm_medium=partner-link&amp;utm_campaign=ac-core_content&amp;utm_content=link_isedbbfitip_e</a>
Capital Investment Program	<a href="https://venturelab.ca/programs/capital-investment-program?utm_source=bbf-orae&amp;utm_medium=website&amp;utm_campaign=FTF&amp;utm_term=business_benefits_finder-outil_recherche_aide_aux_entreprises">venturelab.ca/programs/capital-investment-program?utm_source=bbf-orae&amp;utm_medium=website&amp;utm_campaign=FTF&amp;utm_term=business_benefits_finder-outil_recherche_aide_aux_entreprises</a>
Farm Credit Canada	<a href="https://fcc-fac.ca/en/financing/agriculture/lines-of-credit#7qtemKh=0">fcc-fac.ca/en/financing/agriculture/lines-of-credit#7qtemKh=0</a>

Table 35 presents available private and public sector funding opportunities related to commercialization alongside web links.

**Table 35: Commercialization Funding**

Commercial Funding Program Opportunities	
Program	Website
AC JumpStart	<a href="https://acceleratorcentre.com/programs/ac-jumpstart/">acceleratorcentre.com/programs/ac-jumpstart/</a>
Canadian Technology Accelerators	<a href="https://tradecommissioner.gc.ca/cta-atc/index.aspx?lang=eng">tradecommissioner.gc.ca/cta-atc/index.aspx?lang=eng</a>
CDMN Soft Landing Program	<a href="https://canadastechnetwork.ca/program/soft-landing">canadastechnetwork.ca/program/soft-landing</a>

Table 36 presents available funding opportunities related to economic development and community infrastructure projects alongside web links.

**Table 36: EDO-Community Infrastructure**

EDO-Community Funding Program Opportunities	
Program	Website
Mitacs Municipal Support	<a href="https://innovation.mitacs.ca/en/municipality-support">innovation.mitacs.ca/en/municipality-support</a>
Canada Housing Infrastructure Fund	<a href="https://housing-infrastructure.canada.ca/housing-logement/chif-fcil/index-eng.html">housing-infrastructure.canada.ca/housing-logement/chif-fcil/index-eng.html</a>
Short-Term Rental Enforcement Fund	<a href="https://housing-infrastructure.canada.ca/housing-logement/stref-farlcd/index-eng.html">housing-infrastructure.canada.ca/housing-logement/stref-farlcd/index-eng.html</a>
National Housing Strategy Solutions Labs	<a href="https://cmhc-schl.gc.ca/professionals/project-funding-and-mortgage-financing/funding-programs/all-funding-programs/solution-labs">cmhc-schl.gc.ca/professionals/project-funding-and-mortgage-financing/funding-programs/all-funding-programs/solution-labs</a>
National Housing Strategy Demonstrations Initiative	<a href="https://cmhc-schl.gc.ca/professionals/project-funding-and-mortgage-financing/funding-programs/all-funding-programs/nhs-demonstrations-initiative?utm_medium=email&amp;utm_source=newsletter-cmhc-housing-updates&amp;utm_campaign=2024-08-demonstrations_initiative">cmhc-schl.gc.ca/professionals/project-funding-and-mortgage-financing/funding-programs/all-funding-programs/nhs-demonstrations-initiative?utm_medium=email&amp;utm_source=newsletter-cmhc-housing-updates&amp;utm_campaign=2024-08-demonstrations_initiative</a>
CMHC Affordable Housing Seed Funding	<a href="https://cmhc-schl.gc.ca/professionals/project-funding-and-mortgage-financing/funding-programs/all-funding-programs/seed-funding?utm_medium=email&amp;utm_source=email-e-blast&amp;utm_campaign=2024-03-seed_funding_apply">cmhc-schl.gc.ca/professionals/project-funding-and-mortgage-financing/funding-programs/all-funding-programs/seed-funding?utm_medium=email&amp;utm_source=email-e-blast&amp;utm_campaign=2024-03-seed_funding_apply</a>
Canada Foundation for Innovation	<a href="https://innovation.ca/en/OurFunds">innovation.ca/en/OurFunds</a>

EDO-Community Funding Program Opportunities	
Program	Website
Legacy Fund	<a href="https://canada.ca/en/canadian-heritage/services/funding/building-communities/legacy-fund.html">canada.ca/en/canadian-heritage/services/funding/building-communities/legacy-fund.html</a>
Innovative Communities Fund	<a href="https://canada.ca/en/atlantic-canada-opportunities/services/innovative-communities-fund.html">canada.ca/en/atlantic-canada-opportunities/services/innovative-communities-fund.html</a>

Table 37 presents available government funding opportunities related to clean-tech, energy and environment programs alongside web links.

**Table 37: Clean-Tech, Energy and Environment**

Clean-Tech, Energy and Environment Funding Program Opportunities	
Program	Website
Charged for Change	<a href="https://aviva.ca/en/about-aviva/sustainability/charged-for-change/">aviva.ca/en/about-aviva/sustainability/charged-for-change/</a>
Green Municipal Fund	<a href="https://greenmunicipalfund.ca/new-funding">greenmunicipalfund.ca/new-funding</a>
Nature Smart Climate Solutions Fund- Emission Reductions	<a href="https://canada.ca/en/environment-climate-change/services/environmental-funding/programs/nature-smart-climate-solutions-fund.html">canada.ca/en/environment-climate-change/services/environmental-funding/programs/nature-smart-climate-solutions-fund.html</a>
Clean Water and Wastewater Fund (CWWF)	<a href="https://infrastructure.gc.ca/plan/cwwf-fepeu-eng.html">infrastructure.gc.ca/plan/cwwf-fepeu-eng.html</a>

Clean-Tech, Energy and Environment Funding Program Opportunities	
Program	Website
EcoAction	<a href="https://canada.ca/en/canada-water-agency/funding/ecoaction-community-program.html#toc11">canada.ca/en/canada-water-agency/funding/ecoaction-community-program.html#toc11</a>
Clean Fuels Fund 2.0 (Federal)	<a href="https://natural-resources.canada.ca/energy-sources/clean-fuels/clean-fuels-fund">natural-resources.canada.ca/energy-sources/clean-fuels/clean-fuels-fund</a>
Zero Emission Vehicle Infrastructure Program	<a href="https://nrcan.gc.ca/energy-efficiency/transportation-alternative-fuels/zero-emission-vehicle-infrastructure-program/21876">nrcan.gc.ca/energy-efficiency/transportation-alternative-fuels/zero-emission-vehicle-infrastructure-program/21876</a>
Community Tree Grants	<a href="https://treecanada.ca/">treecanada.ca/</a>
TD Friends of the Environment Foundation Grant	<a href="https://td.com/ca/en/about-td/ready-commitment/funding/fef-grant">td.com/ca/en/about-td/ready-commitment/funding/fef-grant</a>
Local Leadership for Climate Adaption (under GMF)	<a href="https://greenmunicipalfund.ca/local-leadership-climate-adaptation">greenmunicipalfund.ca/local-leadership-climate-adaptation</a>
Empowering Futures Program	<a href="https://electricityhr.ca/workplace-solutions/youth-employment-funding/empowering-futures/">electricityhr.ca/workplace-solutions/youth-employment-funding/empowering-futures/</a>
Growing Canada's Community Canopies	<a href="https://greenmunicipalfund.ca/trees">greenmunicipalfund.ca/trees</a>
Natural Asset Management Roadmap	<a href="https://intactpublicentities.ca/natural-asset-management-roadmap-program">intactpublicentities.ca/natural-asset-management-roadmap-program</a>
Green Freight Program	<a href="https://natural-resources.canada.ca/energy-efficiency/transportation-energy-efficiency/green-freight/green-freight-program#s3">natural-resources.canada.ca/energy-efficiency/transportation-energy-efficiency/green-freight/green-freight-program#s3</a>
SIF – Net Zero Accelerator	<a href="https://ic.gc.ca/eic/site/125.nsf/eng/00039.html">ic.gc.ca/eic/site/125.nsf/eng/00039.html</a>

Clean-Tech, Energy and Environment Funding Program Opportunities	
Program	Website
Mitacs Municipal Support	<a href="https://innovation.mitacs.ca/en/municipality-support">innovation.mitacs.ca/en/municipality-support</a>
Farm Credit Canada Community Fund	<a href="https://fcc-fac.ca/en/community/apply-funding/community-funding">fcc-fac.ca/en/community/apply-funding/community-funding</a>
Clean Energy for Rural and Remote Communities	<a href="https://natural-resources.canada.ca/funding-partnerships/clean-energy-rural-remote-communities-program">natural-resources.canada.ca/funding-partnerships/clean-energy-rural-remote-communities-program</a>
2Billion Trees	<a href="https://canada.ca/en/campaign/2-billion-trees/2-billion-trees-program.html">canada.ca/en/campaign/2-billion-trees/2-billion-trees-program.html</a>
Thriving Forests Program	<a href="https://cleanfoundation.ca/thriving-forests/">cleanfoundation.ca/thriving-forests/</a>
Canada Public Transit Fund, Targeted Funding: Zero Emission Transit Fund	<a href="https://housing-infrastructure.canada.ca/zero-emissions-trans-zero-emissions/index-eng.html">housing-infrastructure.canada.ca/zero-emissions-trans-zero-emissions/index-eng.html</a>
R. Howard Webster Foundation	<a href="https://rhowardwebsterfoundation.ca/grants/grant-application-procedures/">rhowardwebsterfoundation.ca/grants/grant-application-procedures/</a>
The McLean Foundation Grant	<a href="https://mcleanfoundation.ca/applications-2/">mcleanfoundation.ca/applications-2/</a>
McConnell Foundation Grants	<a href="https://mcconnellfoundation.ca/apply/for-applicants/">mcconnellfoundation.ca/apply/for-applicants/</a>
Local Food Infrastructure Fund	<a href="https://agriculture.canada.ca/en/programs/local-food-infrastructure-fund-large">agriculture.canada.ca/en/programs/local-food-infrastructure-fund-large</a>
Smart Renewables and Electrification Pathways Program	<a href="https://natural-resources.canada.ca/climate-change/sreps?utm_source=bbf-orae&amp;utm_medium=website&amp;utm_campaign=FTF&amp;utm_term=business_benefits_finder-outil_recherche_aide_aux_entreprises">natural-resources.canada.ca/climate-change/sreps?utm_source=bbf-orae&amp;utm_medium=website&amp;utm_campaign=FTF&amp;utm_term=business_benefits_finder-outil_recherche_aide_aux_entreprises</a>

Table 38 presents available government programs and funding opportunities related to creative industries alongside web links.

**Table 38: Creative Industries**

Creative Industries Funding Program Opportunities	
Program	Website
Canadian Media Fund	<a href="http://cmf-fmc.ca/our-programs/">cmf-fmc.ca/our-programs/</a>
Legacy Fund – Building Communities through Arts and Heritage	<a href="https://www.canada.ca/en/canadian-heritage/services/funding/building-communities/legacy-fund.html">https://www.canada.ca/en/canadian-heritage/services/funding/building-communities/legacy-fund.html</a>
FACTOR - Funding for the Music Industry	<a href="http://factor.ca/our-programs/our-programs-overview/">factor.ca/our-programs/our-programs-overview/</a>
Film or Video Production Services Tax Credit (PSTC)	<a href="http://canada.ca/en/canadian-heritage/services/funding/cavco-tax-credits/film-video-production-services.html">canada.ca/en/canadian-heritage/services/funding/cavco-tax-credits/film-video-production-services.html</a>
Museums Assistance Program	<a href="http://canada.ca/en/canadian-heritage/services/funding/museums-assistance.html">canada.ca/en/canadian-heritage/services/funding/museums-assistance.html</a>
Local Festivals – Building Communities Through Arts and Heritage	<a href="http://canada.ca/en/canadian-heritage/services/funding/building-communities/festivals.html">canada.ca/en/canadian-heritage/services/funding/building-communities/festivals.html</a>
Community Anniversaries – Building Communities through Arts and Heritage	<a href="http://canada.ca/en/canadian-heritage/services/funding/building-communities/anniversaries.html">canada.ca/en/canadian-heritage/services/funding/building-communities/anniversaries.html</a>
Professional Arts Festivals and Performing Arts Series Presenters – Canada Arts Presentation Fund	<a href="http://canada.ca/en/canadian-heritage/services/funding/arts-presentation-">canada.ca/en/canadian-heritage/services/funding/arts-presentation-</a>

Creative Industries Funding Program Opportunities	
Program	Website
	<a href="https://www.innisfail.ca/fund/programming-arts-festivals-series-presenters.html?">fund/programming-arts-festivals-series-presenters.html?</a>
Canada Music Fund	<a href="https://canada.ca/en/canadian-heritage/services/funding/music-fund.html">canada.ca/en/canadian-heritage/services/funding/music-fund.html</a>
Canada Periodical Fund	<a href="https://canada.ca/en/canadian-heritage/services/funding/periodical-fund.html">canada.ca/en/canadian-heritage/services/funding/periodical-fund.html</a>
Indigenous Languages Program	<a href="https://canada.ca/en/canadian-heritage/services/funding/aboriginal-peoples.html">canada.ca/en/canadian-heritage/services/funding/aboriginal-peoples.html</a>
Telefilm Canada	<a href="https://telefilm.ca/en/we-finance-and-support/our-programs">telefilm.ca/en/we-finance-and-support/our-programs</a>
Creative Export Canada	<a href="https://canada.ca/en/canadian-heritage/services/funding/creative-export-canada.html">canada.ca/en/canadian-heritage/services/funding/creative-export-canada.html</a>
Council of Canada for the Arts Grants	<a href="https://canadacouncil.ca/funding/grants">canadacouncil.ca/funding/grants</a>
Canada Cultural Spaces Fund (CCSF)	<a href="https://canada.ca/en/canadian-heritage/services/funding/cultural-spaces-fund/application-guidelines.html#a25">canada.ca/en/canadian-heritage/services/funding/cultural-spaces-fund/application-guidelines.html#a25</a>
Canada Periodical Fund	<a href="https://canada.ca/en/canadian-heritage/services/funding/periodical-fund/business-innovation.html">canada.ca/en/canadian-heritage/services/funding/periodical-fund/business-innovation.html</a>
Canada's Music Incubator Artist Entrepreneur	<a href="https://canadasmusicincubator.com/cmi-programs/artist-entrepreneur/">canadasmusicincubator.com/cmi-programs/artist-entrepreneur/</a>

Creative Industries Funding Program Opportunities	
Program	Website
Rogers Documentary Fund	<a href="https://rogersgroupoffunds.com/fund-my-project/documentary-fund/">rogersgroupoffunds.com/fund-my-project/documentary-fund/</a>

Table 39 presents available government programs and public/private-sector organizations related to exports alongside web links.

**Table 39: Exports**

Exports Program Opportunities	
Program	Website
Canadian Commercial Corporation (CCC)	<a href="https://ccc.ca/">ccc.ca/</a>
Export Development Canada	<a href="https://edc.ca/">edc.ca/</a>
Business Innovation and Growth Application Toolkit	<a href="https://ised-isde.canada.ca/site/strategic-innovation-fund/en/project-requirements/business-innovation-and-growth">ised-isde.canada.ca/site/strategic-innovation-fund/en/project-requirements/business-innovation-and-growth</a>
CanExport - Innovation	<a href="https://tradecommissioner.gc.ca/tcs-sdc/funding-financement/canexport/innovation/index.aspx?lang=eng">tradecommissioner.gc.ca/tcs-sdc/funding-financement/canexport/innovation/index.aspx?lang=eng</a>
CanExport - SMEs	<a href="https://tradecommissioner.gc.ca/funding-financement/canexport/sme-pme/index.aspx?lang=eng">tradecommissioner.gc.ca/funding-financement/canexport/sme-pme/index.aspx?lang=eng</a>

Table 40 presents available government programs and public/private-sector organizations related to human resources alongside web links.

**Table 40: Human Resources and Training**

Human Resources and Training Program Opportunities	
Program	Website
Canada Retraining and Opportunities Initiative	<a href="https://canada.ca/en/employment-social-development/services/funding/canada-retraining-and-opportunities-initiative.html">canada.ca/en/employment-social-development/services/funding/canada-retraining-and-opportunities-initiative.html</a>
Apprenticeship Job Creation Tax Credit	<a href="https://canada.ca/en/revenue-agency/services/tax/individuals/topics/about-your-tax-return/tax-return/completing-a-tax-return/deductions-credits-expenses/line-41200-investment-tax-credit/apprenticeship-job-creation-tax-credit.html">canada.ca/en/revenue-agency/services/tax/individuals/topics/about-your-tax-return/tax-return/completing-a-tax-return/deductions-credits-expenses/line-41200-investment-tax-credit/apprenticeship-job-creation-tax-credit.html</a>
Foreign Credential Recognition Program	<a href="https://canada.ca/en/employment-social-development/services/funding/foreign-credential-recognition.html">canada.ca/en/employment-social-development/services/funding/foreign-credential-recognition.html</a>
Young Canada Works	<a href="https://archivescanada.ca/young-canada-works/">archivescanada.ca/young-canada-works/</a>
Canada Summer Jobs	<a href="https://canada.ca/en/employment-social-development/services/funding/canada-summer-jobs.html">canada.ca/en/employment-social-development/services/funding/canada-summer-jobs.html</a>
Clean Foundation Workforce Development	<a href="https://cleanfoundation.ca/workforce-development/">cleanfoundation.ca/workforce-development/</a>
Canada Retraining and Opportunities Initiative	<a href="https://canada.ca/en/employment-social-development/services/funding/canada-retraining-and-opportunities-initiative.html">canada.ca/en/employment-social-development/services/funding/canada-retraining-and-opportunities-initiative.html</a>

Human Resources and Training Program Opportunities	
Program	Website
Science Horizons Youth Internship Program	<a href="https://biotalent.ca/programs/science-horizons-youth-internship-program/">biotalent.ca/programs/science-horizons-youth-internship-program/</a>
Science and Technology Internship Programme	<a href="https://unac.org/cgc-stip">unac.org/cgc-stip</a>
Youth Employment and Skills Strategy Programs	<a href="https://canada.ca/en/employment-social-development/services/funding/youth-employment-strategy.html">canada.ca/en/employment-social-development/services/funding/youth-employment-strategy.html</a>
Mitacs Accelerate	<a href="https://mitacs.ca/our-programs/accelerate-fellowship-students-postdocs/">mitacs.ca/our-programs/accelerate-fellowship-students-postdocs/</a>
MITACS Elevate	<a href="https://mitacs.ca/our-programs/elevate-business/">mitacs.ca/our-programs/elevate-business/</a>
Apprenticeship Incentive Grant	<a href="https://canada.ca/en/employment-social-development/services/funding/apprenticeship-incentive-overview.html">canada.ca/en/employment-social-development/services/funding/apprenticeship-incentive-overview.html</a>
Young Canada Works	<a href="https://young-canada-works.canada.ca/Account/Login?ReturnUrl=%2F">young-canada-works.canada.ca/Account/Login?ReturnUrl=%2F</a>
FCC Women Entrepreneur Program	<a href="https://fcc-fac.ca/en/financing/agriculture/women-entrepreneur-program">fcc-fac.ca/en/financing/agriculture/women-entrepreneur-program</a>
Women Entrepreneurship Loan Fund	<a href="https://ised-isde.canada.ca/site/women-entrepreneurship-strategy/en/women-entrepreneurship-loan-fund?utm_source=bbf-orae&amp;utm_medium=website&amp;utm_campaign=FTF&amp;utm_term=business_benefits_finder-outil_recherche_aide_aux_entreprises">ised-isde.canada.ca/site/women-entrepreneurship-strategy/en/women-entrepreneurship-loan-fund?utm_source=bbf-orae&amp;utm_medium=website&amp;utm_campaign=FTF&amp;utm_term=business_benefits_finder-outil_recherche_aide_aux_entreprises</a>
Opportunities Fund	<a href="https://biotalent.ca/programs/">biotalent.ca/programs/</a>

Human Resources and Training Program Opportunities	
Program	Website
Career Ready Program ITAC Wage Subsidy	<a href="https://technationcanada.ca/en/future-workforce-development/career-ready-program/">technationcanada.ca/en/future-workforce-development/career-ready-program/</a>

Table 41 presents available government programs and public/private-sector organizations related to innovation alongside web links.

**Table 41: Innovation**

Innovation Program Opportunities	
Program	Website
Indigenous Business Development	<a href="https://canada.ca/en/indigenous-services-canada.html">canada.ca/en/indigenous-services-canada.html</a>
Connect to Innovate	<a href="https://ised-isde.canada.ca/site/connect-to-innovate/en">ised-isde.canada.ca/site/connect-to-innovate/en</a>
Creative Export Canada	<a href="https://canada.ca/en/canadian-heritage/services/funding/creative-export-canada.html">canada.ca/en/canadian-heritage/services/funding/creative-export-canada.html</a>
Genome Canada	<a href="https://genomecanada.ca/">genomecanada.ca/</a>
Impact Canada Challenge Hub	<a href="https://impact.canada.ca/en">impact.canada.ca/en</a>
National Science and Engineering Council of Canada	<a href="https://nserc-crsng.gc.ca/Professors-Professeurs/Grants-Subs/Explore-Explorer_eng.asp">nserc-crsng.gc.ca/Professors-Professeurs/Grants-Subs/Explore-Explorer_eng.asp</a>
Next Generation Manufacturing Program	<a href="https://ngen.ca/">ngen.ca/</a>
Strategic Innovation Fund (SIF)	<a href="https://ic.gc.ca/eic/site/125.nsf/eng/home">ic.gc.ca/eic/site/125.nsf/eng/home</a>

Innovation Program Opportunities	
Program	Website
Bioenterprise	<a href="https://bioenterprise.ca/">bioenterprise.ca/</a>
Innovation for Defence and Security (IDEaS)	<a href="https://canada.ca/en/department-national-defence/programs/defence-ideas.html">canada.ca/en/department-national-defence/programs/defence-ideas.html</a>
AI-Powered Supply Chains Supercluster (SCALE.AI)	<a href="https://scaleai.ca/projects/">scaleai.ca/projects/</a>
Innovative Solutions Canada	<a href="https://ic.gc.ca/eic/site/101.nsf/eng/home">ic.gc.ca/eic/site/101.nsf/eng/home</a>
Voice Technology Accelerator Program	<a href="https://acceleratorcentre.com/programs/alexa-voice-tech-accelerator-program">acceleratorcentre.com/programs/alexa-voice-tech-accelerator-program</a>
Idea to Innovation Grants	<a href="https://nserc-crsng.gc.ca/Professors-Professeurs/RPP-PP/I2I-INNOV_eng.asp">nserc-crsng.gc.ca/Professors-Professeurs/RPP-PP/I2I-INNOV_eng.asp</a>



## About the Data

Please note that every effort has been made to use the most current data available. The major sources of information for this document are:

- The 2006, 2011, 2016 and 2021 Census from Statistics Canada.
- Manifold SuperDemographics data is from 2025 Manifold Data Mining Inc.

The most recent Census was conducted in May 2021. SuperDemographics 2025 is the most up to date estimation of population characteristics, based on mathematical models that draw from various data sources.

---

### **Manifold Projection Method:**

---

Manifold estimates demographic data annually, including population projections for 5 and 10 years in the future. Manifold data sources include Statistics Canada, Health Canada, real estate boards/companies, Canadian Bankers Association, Bank of Canada, Canada Post Corporation, consumer and business directories books, flyer distribution association, regional health ministries, Citizenship and Immigration Canada, regional school boards, proprietary survey and research, and publications of hospitals, CM HC, BBM and partners.



John Powell  
Economic Development Officer  
Town of Innisfail  
4943 – 53 Street  
Innisfail, Alberta, T4G 1A1

P: 403.227.3376 ext. 217

[john.powell@innisfail.ca](mailto:john.powell@innisfail.ca)

[innisfail.ca](http://innisfail.ca)

